



**NATURALLY
DRAWN**

Milliken™

NATURALLY DRAWN

“Art takes nature as its model.” Aristotle

From nature’s calendar to the artist’s studio, from the outside to the inside, creative minds have joined to create four coorindating designs drawn from nature and reinterpreted through artistic expression. Watercolour Lesson, Drawing In Ink, Hand Sketched and Hand Sketched Transition, each one lovingly crafted through its artist’s medium: watercolour, ink and pencil sketch. Four designs, each with a story to tell.



Top and Bottom: Watercolour Lesson in Dungaree (WLN158-139) and Pencil Grey (WLN25-132) | Brick (Horizontal) Installation
Middle: Hand Sketched in Dungaree (HSK139-153) | Brick (Horizontal) Installation



WATERCOLOUR LESSON
IN OCEAN | WLN157



DRAWING IN INK
IN OCEAN/SKYLINE | DWK157-73



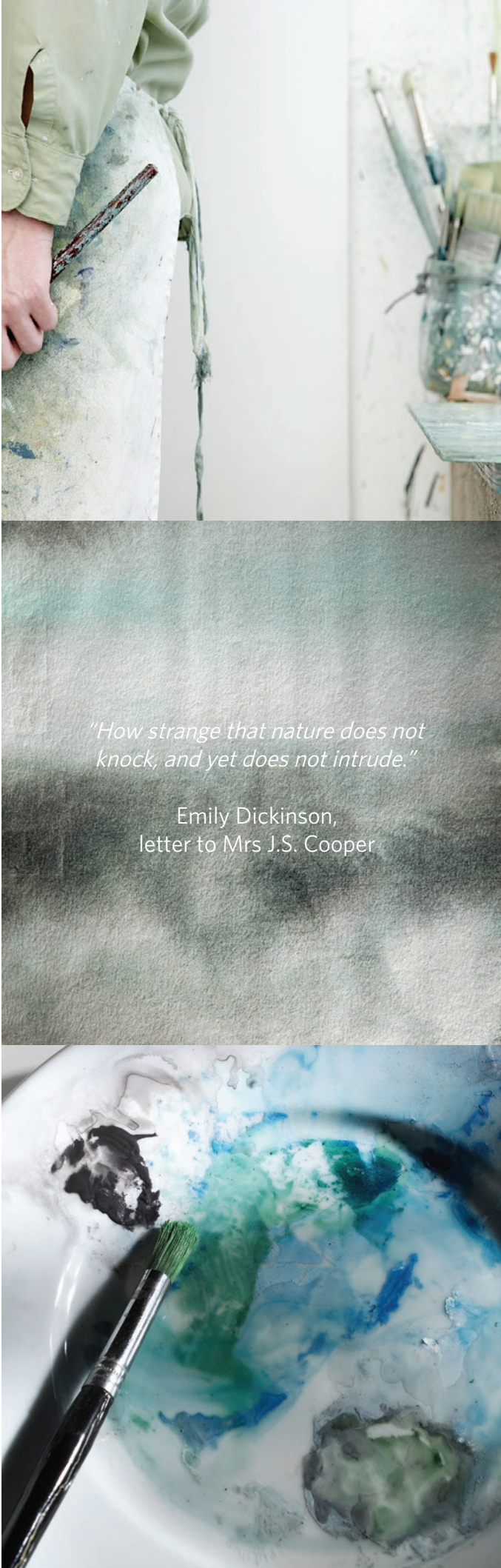
HAND SKETCHED
IN OCEAN | HSK139



HAND SKETCHED TRANSITION
(BOTTOM) IN SKYLINE | OCEAN
HSB73-139

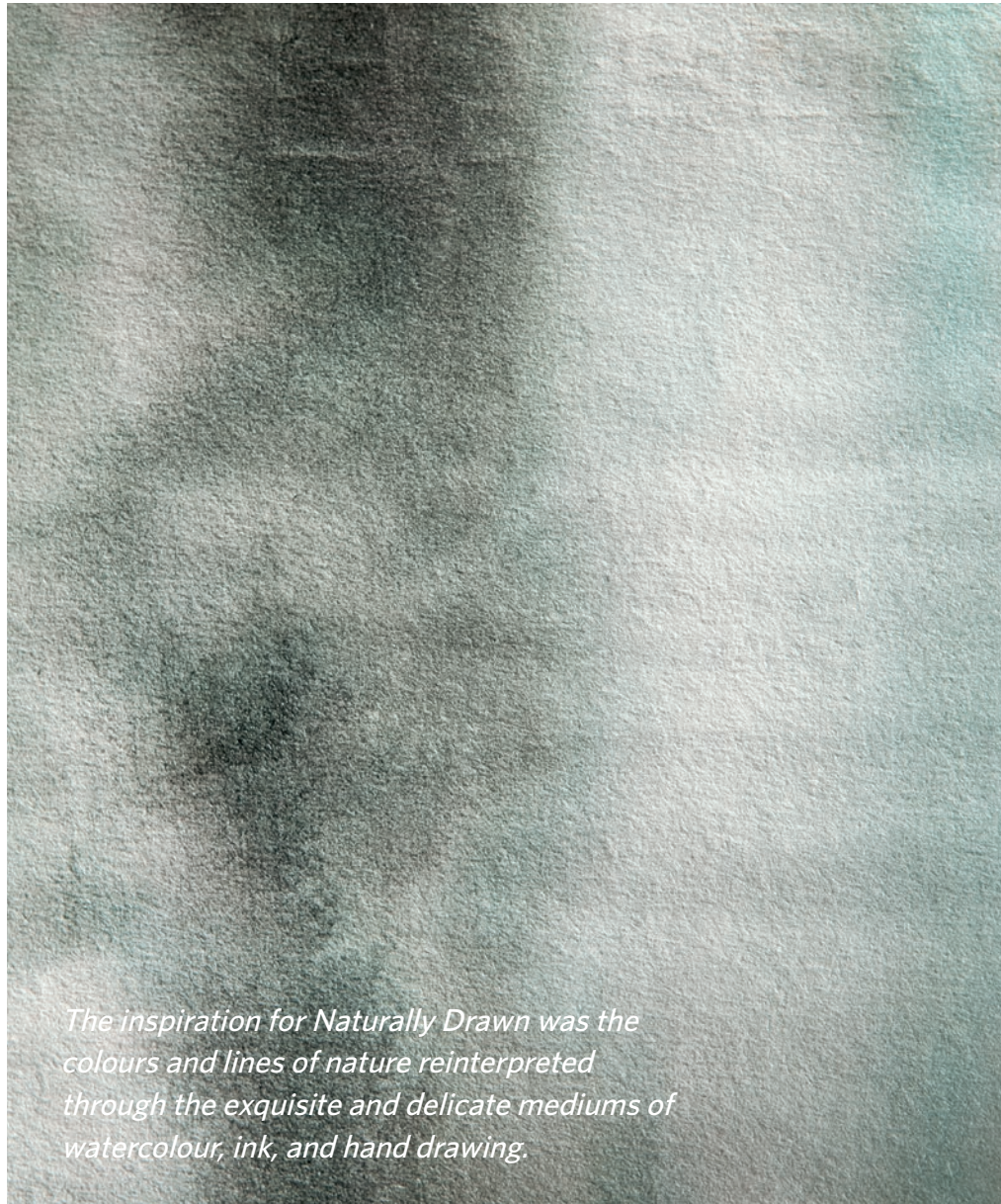


HAND SKETCHED TRANSITION
(TOP) IN OCEAN | SKYLINE
HST139-73



*"How strange that nature does not
knock, and yet does not intrude."*

Emily Dickinson,
letter to Mrs J.S. Cooper



The inspiration for Naturally Drawn was the colours and lines of nature reinterpreted through the exquisite and delicate mediums of watercolour, ink, and hand drawing.



The Bureau of Meteorology, Sydney, Australia | IA Design | Photographer: Phu Tang
Left to Right: Naturally Drawn in Drawing in Ink, Spotted Dove | Tinsmith (DWK94-68) and Amplifier in Treble Brick (Horizontal) Installation



Aorangi Orthopaedics Head Office, Wellington, New Zealand | SPACES Interior Design + Styling
Drawing In Ink in Shell Brown | Peppercorn (DWK165-79) and Watercolour Lesson in Peppercorn (WLN13-79) | Brick (Horizontal) Installation





Thiess Head Office, Southbank VIC, Australia | Priority Building | Photographer: Ruth Ryan Photography
Drawing In Ink in Shell Brown | Peppercorn | DWK165-79 | Brick (Horizontal) Installation



Thiess Head Office, Southbank VIC, Australia | Priority Building | Photographer: Ruth Ryan Photography
Drawing In Ink in Shell Brown | Peppercorn | DWK165-79 | Brick (Horizontal) Installation



Thiess Head Office, Southbank VIC, Australia | Priority Building | Photographer: Ruth Ryan Photography
Watercolour Lesson in Shell Brown (WLN118-169) | Brick (Horizontal) Installation



Hand Sketched Transition, Hand Sketched and Watercolour Lesson | Brick (Horizontal) Installation

COORDINATION FROM TOP TO BOTTOM

While Hand Sketch Transition is coordinated for smooth gradients between Hand Sketched colours, Drawing In Ink and Watercolour Lesson are also designed to easily coordinate with the Hand Sketched colourline while creating dramatically different visual effects.

Use the full kit of parts in different areas of a project to define spaces while maintaining tight coordination throughout.



HAND SKETCHED & HAND SKETCHED TRANSITION

Hand Sketched is created with free-flowing fine pencil lines by the artist's own hand to form shifting ombré tones that undulate smoothly across the tile.

The Hand Sketched design is offered with a companion, accessory design, Hand Sketched Transition. The Hand Sketched Transition design enables an effortless colour flow from one Hand Sketched colour into the next, without hard lines or distracting colour breaks.

Sometimes blending complementary colours, sometimes merging contrasting colours, Hand Sketched Transition allows you to create a smooth and continuous flow of organically changing colour across the floor plane.



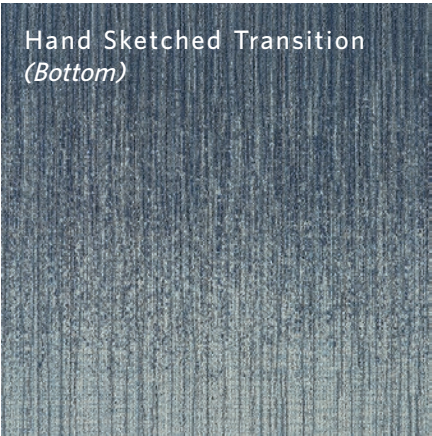
HSK139 OCEAN



HST139-73 OCEAN | SKYLINE



HSK73 SKYLINE



HSB73-139 SKYLINE | OCEAN



Top, Middle to Bottom: Hand Sketched in Ocean (HSK139), Hand Sketched Transition in Ocean | Skyline (HST139-73) and Hand Sketched in Skyline (HSK73) | Brick (Horizontal) Installation





Drawing In Ink in Meadow | Olive | DWK78-23-21 | Brick (Horizontal) Installation



Top to Bottom: Drawing In Ink in Sand | Vintage Taupe (DWK44-15), Hand Sketched in Vintage Taupe (HSK124-44), and Watercolour Lesson in Vintage Taupe (WLN21-124) | Brick (Horizontal) Installation

COLOURWAY

Hand Sketched



HSK124-15 ANTIQUE SAND



HSK173 SPOTTED DOVE



HSK144-108 SHELL BROWN



HSK153-13 ASH



HSK139 OCEAN



HSK139-153 DUNGAREE



HSK45-21 FERN



HSK23-21 MEADOW

Hand Sketched Transition (Top)



HST15-124-44
ANTIQUE SAND | VINTAGE TAUPE



HST173-94
SPOTTED DOVE | TINSMITH



HST144-108-114
SHELL BROWN | PEPPERCORN



HST153-133-13
ASH | JET



HST139-73
OCEAN | SKYLINE



HST139-118-153
DUNGAREE | PENCIL GREY



HST45-88-21
FERN | MOSS GREEN



HST100-23-21
MEADOW | OLIVE

Hand Sketched



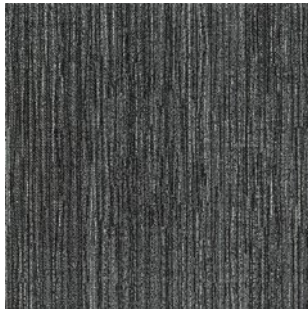
HSK124-44 VINTAGE TAUPE



HSK94 TINSMITH



HSK174-108 PEPPERCORN



HSK133-13 JET



HSK73 SKYLINE



HSK118-153 PENCIL GREY



HSK45-88 MOSS GREEN



HSK100-23 OLIVE

Hand Sketched Transition (Bottom)



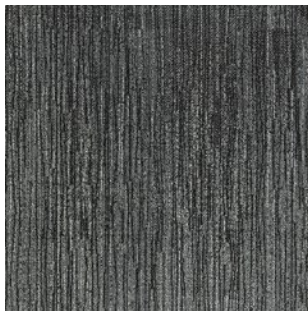
HSB124-15-44
VINTAGE TAUPE | ANTIQUE SAND



HSB94-173
TINSMITH | SPOTTED



HSB108-144-114
PEPPERCORN | SHELL BROWN



HSB133-153-13
JET | ASH



HSB73-139
SKYLINE | OCEAN



HSB118-139-153
PENCIL GREY | DUNGAREE



HSB88-45-21
MOSS GREEN | FERN



HSB23-100-21
OLIVE | MEADOW

COLOURWAY

Watercolour Lesson



WLN21-12 ANTIQUE SAND



WLN144-83 SPOTTED DOVE



WLN118-169 SHELL BROWN



WLN13-153 ASH



WLN157 OCEAN



WLN158-139 DUNGAREE



WLN103-45 FERN



WLN23-21 MEADOW



WLN21-124 VINTAGE TAUPE



WLN59-145 TINSMITH



WLN13-79 PEPPERCORN



WLN133-13 JET



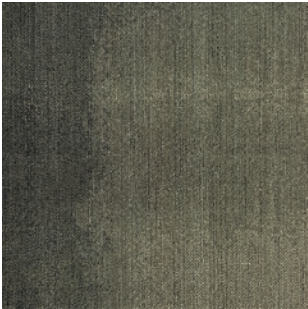
WLN73 SKYLINE



WLN25-132 PENCIL GREY

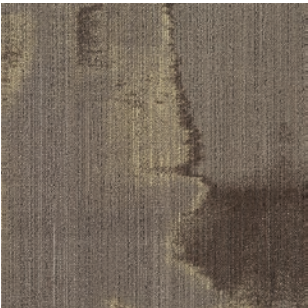


WLN64-45 MOSS GREEN



WLN23-54 OLIVE

Drawing In Ink



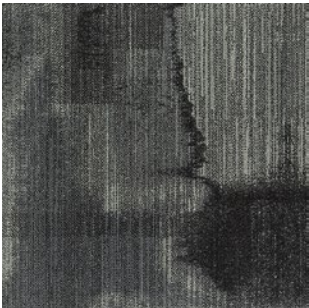
DWK44-15 ANTIQUE SAND | VINTAGE TAUPE



DWK94-68 SPOTTED DOVE | TINSMITH



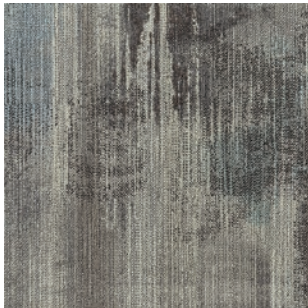
DWK165-79 SHELL BROWN | PEPPERCORN



DWK144-13-153 ASH | JET



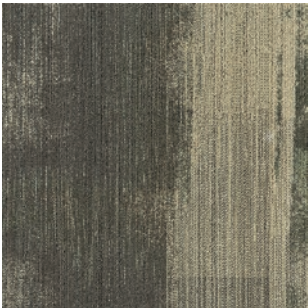
DWK153-73 OCEAN | SKYLINE



DWK139-153 DUNGAREE | PENCIL GREY



DWK103-21-45 FERN | MOSS GREEN



DWK78-23-21 MEADOW | OLIVE



Aorangi Orthopaedics Head Office, Wellington, New Zealand | SPACES Interior Design + Styling
Drawing In Ink in Shell Brown | Peppercorn (DWK165-79) and Watercolour Lesson in Peppercorn (WLN13-79) | Brick (Horizontal) Installation

Milliken



Self-sanitising Carpet

Integrated Infection Control



MGUARD+ treatment kills 99% of the SARS-CoV-2 virus within 2 hours of contact with Milliken PrintWorks™ carpet tiles.

MGUARD+ treatment kills 99% of *S. aureus*, *E. coli*, *K. pneumoniae* in 24 hours as per AATCC 174-2.

Duration of protection varies with use.

Powered by HealthGuard®.

Only available in Australia and New Zealand.

Declare.



WellBAC®

Milliken WellBAC® open cell foam cushion provides superior durability, appearance retention and cushioning.



Up to 24% greater underfoot comfort for enhanced ergonomics whilst standing.



Up to 50% improved acoustics for quieter, more productive spaces.



Industry leading moisture management with non-reactive backings to enhance the installation process.



3rd party Verified Red-List Free products for occupant and installer well-being.



Enhanced Indoor Air Quality (Low VOC) for improved occupant and installer well-being.

FACE FABRIC

Patterns and structures made up of nylon yarns with our state of the art tufting technology.

PRIMARY BACKING

The face yarn is tufted through a high quality non-woven textile. The structure of the textile holds the yarn in place acting as the primary backing.

PRECOAT

The precoat layer locks the tufted yarns in the primary backing to ensure good tuft bind strength between the yarns and the backing.

FIBERGLASS

A high quality fiberglass layer is embedded in the polyolefin compound to ensure dimensional stability of the tile.

SECONDARY BACKING

Proprietary Polyolefin compound layer formulated by Milliken R&D scientists to create a durable and stable tile. Our formulation does not contain PVC or plasticizers.

PREMIUM CUSHION

WellBAC® Comfort and Comfort Plus incorporate a premium cushion layer, designed to provide additional health and wellness benefits. Milliken's cushion is made from recycled polyurethane foam.

FELT BACK

A protective non-woven textile layer provides a breathable non-reactive finish. It enhances health and wellness.

Milliken's standard cushion backing system — offering enhanced underfoot comfort, acoustic and wear performance.

Milliken

NATURALLY DRAWN

Drawing In Ink | Watercolour Lesson
Hand Sketched | Hand Sketched Transition

SPECIFICATION



When you choose M/PACT™ products, you can be sure your choice is carbon neutral. M/PACT™ carbon neutral products offset the raw materials and manufacturing carbon footprint* by using 3rd party Verified Carbon Standard Credits that support renewable energy and carbon reduction technologies to help fight climate change.
*as calculated and verified through a ISO14025/ISO14040 compliant LCA and published in third party EPD.

Standard Backing	Cushion Backing WellBAC® Comfort (PVC FREE) (Non-Reactive Cushion Backing)
Acoustic Value	Noise Reduction Coefficient - NRC ≥ 0.25 Impact Sound Pressure Level - $L_{n,w} \leq 47dB$
Concrete Slab Moisture Mitigation	Site-Related Solutions (SRS). Milliken Cushion backed tile + Non-Reactive Standard adhesive means installation 60 days after a new concrete pour, fully warranted no moisture testing required. Refer millikenfloors.com.au
Antiviral Antibacterial	MGUARD+ Antiviral and Antibacterial Treatment. Further information refer to millikenfloors.com.au

Construction	Tufted, Textured Loop	Lightfastness (AATCC16E)	≥ 4.0 at 80 Hours
Tile Size	50cm x 50cm	Static Electricity	$\leq 3.5KV$
Yarn Type	Milliken Certified 100% Nylon	(AATCC-134) 20% R.H., 70°F	
Stain Resist Soil Release	StainSmart®	Indoor Air Quality CRI Green Label Plus™	$\leq 0.5mg/m^3$ (GLP0793)
Dye Method	PrintWorks™	VOC	Pass (ISO10580:2010)
Gauge	1/12	ACCS Grading	CEHD 4*, REHD2 6*, Suitable for Stairs
Stitches Per Inch	11.2	Environmental	ECS Grading - Level 4 (Certificate No. 20166)
Tufts	134/in ² (2,081/100cm ²)		Declare - 3rd Party Verified RED LIST FREE
Recyclable	100%		Cradle to Cradle - Silver
Nominal Total Thickness	8.2mm		Carbon Neutral
Nominal Total Weight	92.9 oz/yd ² (3,150g/m ²)		Environmental Product Declaration (EPD)
Nominal Pile Thickness	2.1mm		Health Product Declaration (HPD)
Flammability (Radiant Panel Test)	CHF/CRF = 5.2kW/m ² , Smoke value = 182%.min		

Recommended Installation Method(s)	Brick (Horizontal)
Recommended Area of Use	Commercial Extra Heavy Duty
Warranties	15-year Wear Warranty 15-year Dimensional Stability Warranty 15-year Anti-Static Warranty 15-year Castor Chair Wear Warranty



Alliance
Founding
Member

Declare.



Milliken

Aorangi Orthopaedics Head Office, Wellington, New Zealand |
SPACES Interior Design + Styling
Drawing In Ink in Shell Brown | Peppercorn (DWK165-79)
Brick (Horizontal) Installation

Australia:
Toll Free: 1800 668 372
New Zealand:
Toll Free: 0800 668 372
www.millikenfloors.com.au
(Australia & New Zealand)

This WellBAC® cushion-back carpet tile product is covered by one or more patents, published applications and/ or patents pending. Specifications are subject to normal manufacturing tolerances and may be changed without prior notice. Copies of actual test results are available upon request.

© 2022 Milliken & Company | Design © Milliken & Company