



MOMENTUM

Milliken

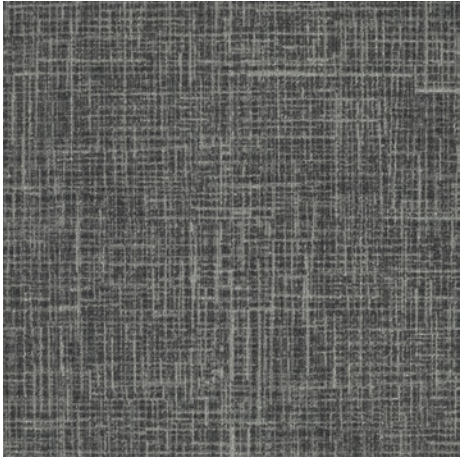
MOMENTUM

The very force of movement – momentum – is forever at play, its impact both natural and spiritual, indifferent to the passing of time.

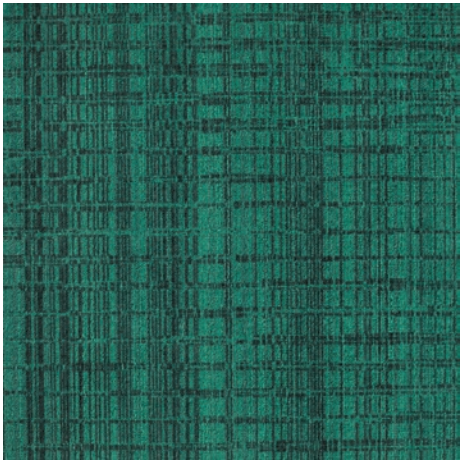
The Momentum Collection juxtaposes the patterns and hues of this age-old power in a contemporary context – Figment reflects subtle dream-like markings while Mythology remembers ancient mystical structures. Inspired by ancient spiritualism, bring your commercial spaces to life with the sacred markings and ethereal colours of Momentum.



Left to Right: Figment in Facade (FIG41) and Mythology in Fiction (MYT74) | Brick (Horizontal) Installation



FIGMENT IN FACADE
FIG41



MYTHOLOGY IN FICTION
MYT74





Field: Figment in Creation | FIG83 | Brick (Horizontal) Installation
 Inset: Figment in Ambience | FIG146 | Brick (Horizontal) Installation

FIGMENT

Reflecting the texture and substance of the spirituality of nature, dream-like and imagined.



FIG83
 CREATION

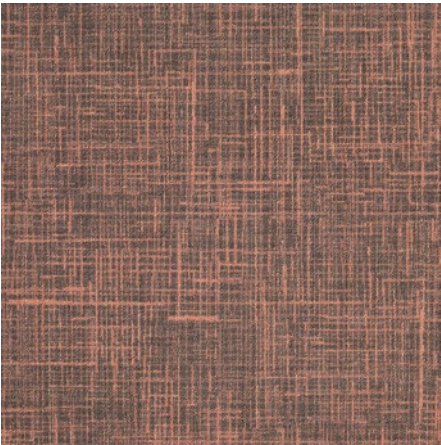


FIG146
 AMBIENCE



Left to Right: Figment in Creation (FIG83) and
 Mythology in Creation (MYT83) | Brick (Horizontal) Installation



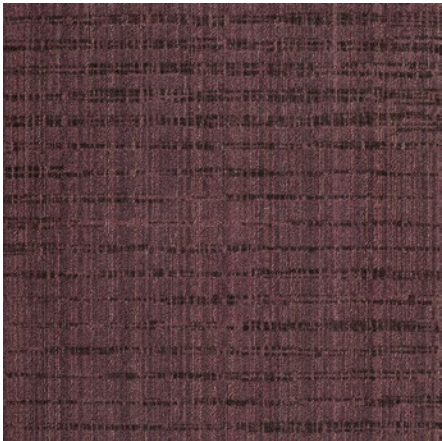
Left to Right: Mythology in Tale (MYT105) and
Figment in Tale (FIG105), Parable (FIG153) and Optical (FIG13) | Monolithic Installation

MYTHOLOGY

A subtle, textured pattern reflecting the linear markings of ancient temples and shrines, dedicated to divine powers long ago.



MYTHOLOGY IN SAGA
MYT143



MYTHOLOGY IN AURA
MYT104



Mythology in Saga | MYT143 | Brick (Horizontal) Installation



Mythology in Aura | MYT104 | Brick (Horizontal) Installation





Top to Bottom: Mythology in Image (MYT181) and Figment in Image (FIG55) | Brick (Horizontal) Installation



Figment in Perceive | FIG19 | Brick (Horizontal) Installation



Mythology in Saga | MYT143 | Brick (Horizontal) Installation



Figment in Saga | FIG143 | Brick (Horizontal) Installation

COLOURWAY

Figment



FIG153 PARABLE

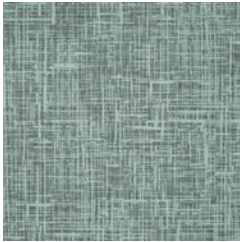


FIG172 SCENT



FIG83 CREATION

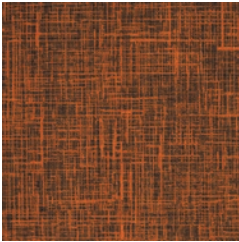


FIG33 THEME

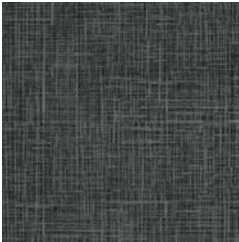


FIG13 OPTICAL

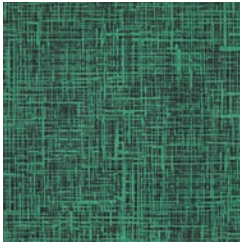


FIG162 DEPICT

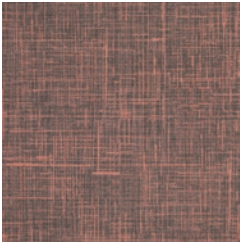


FIG146 AMBIENCE

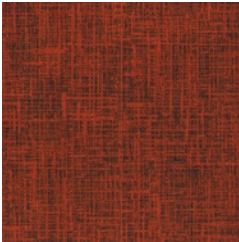


FIG102 BELIEF



FIG79 INVENT

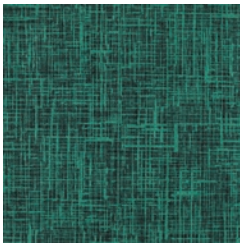


FIG74 FICTION



FIG181 IMAGE

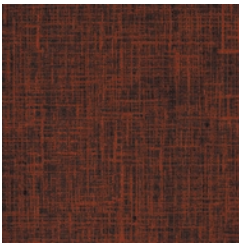


FIG109 DREAM

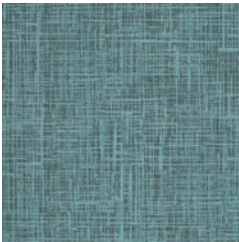


FIG140 LEGEND

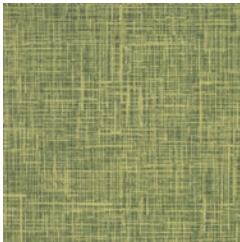


FIG75 DELUSION

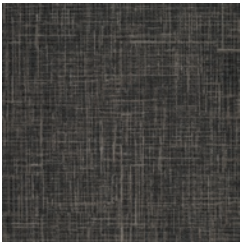


FIG143 SAGA

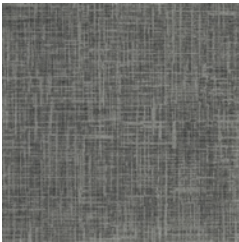


FIG55 IMAGINE

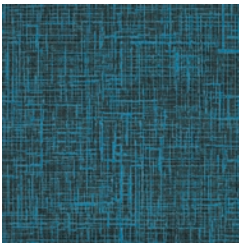


FIG159 NOVEL

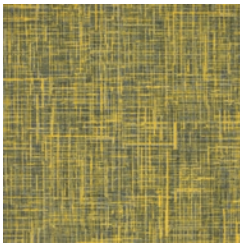


FIG6-111 TRANCE



FIG104 AURA

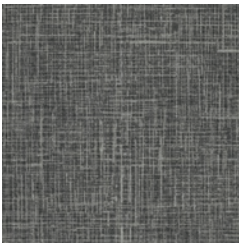


FIG41 FACADE

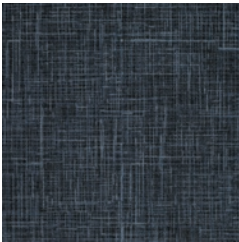


FIG19 PERCEIVE

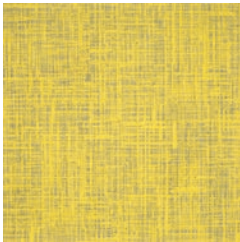


FIG105 TALE



FIG164 FANTASY

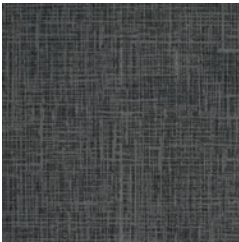
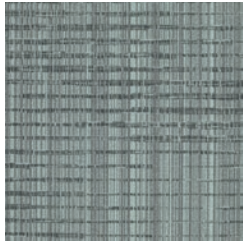


FIG174 NARRATE

COLOURWAY

Mythology



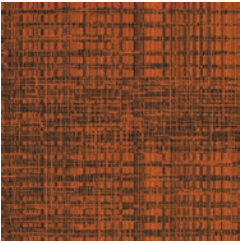
MYT153 PARABLE



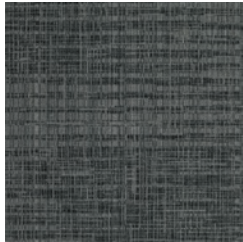
MYT172 SCENT



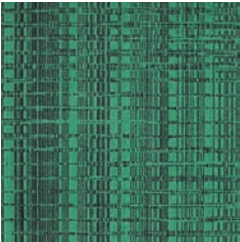
MYT83 CREATION



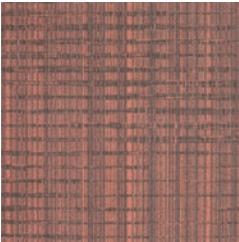
MYT33 THEME



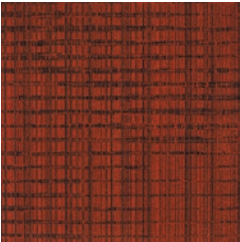
MYT13 OPTICAL



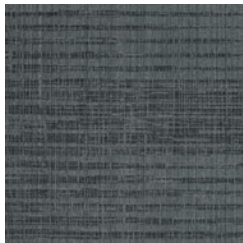
MYT162 DEPICT



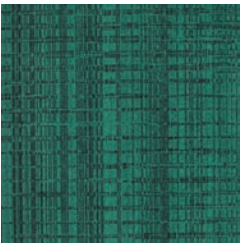
MYT146 AMBIENCE



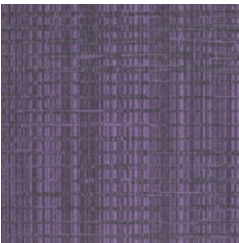
MYT102 BELIEF



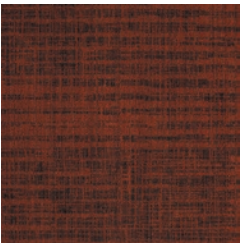
MYT79 INVENT



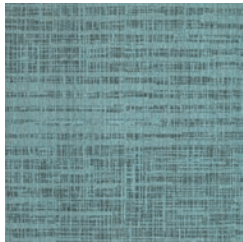
MYT74 FICTION



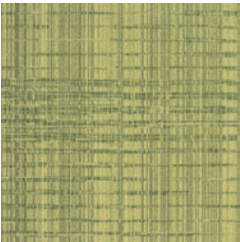
MYT181 IMAGE



MYT109 DREAM



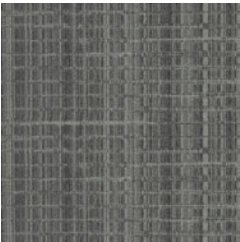
MYT140 LEGEND



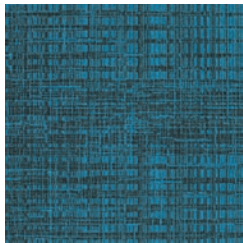
MYT75 DELUSION



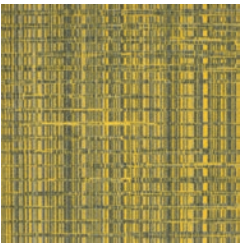
MYT143 SAGA



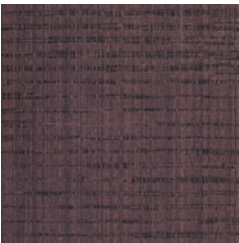
MYT55 IMAGINE



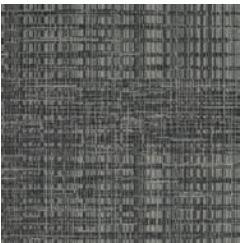
MYT159 NOVEL



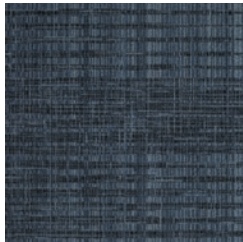
MYT6-111 TRANCE



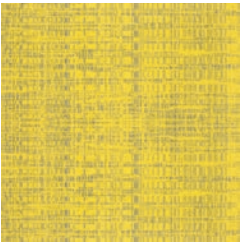
MYT104 AURA



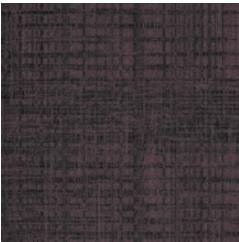
MYT41 FACADE



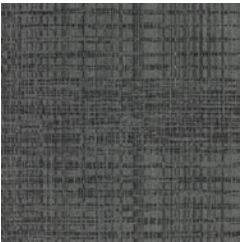
MYT19 PERCEIVE



MYT105 TALE



MYT164 FANTASY



MYT174 NARRATE



It takes humans to protect humanity.

Make changes to end climate change.

Design a better future.

M/PACT™
CARBON NEUTRAL PROGRAM

CLIMATE CHANGE IS ONE OF THE GREATEST THREATS FACING HUMANITY, AND WE ARE ALL RESPONSIBLE.

That's why Milliken Floor Covering launched the **M/PACT™** carbon neutral program. Today, our carpet, LVT and entrance flooring tiles are carbon neutral everywhere in the world.

M/PACT carbon neutral products offset the raw materials and manufacturing carbon footprint* by using 3rd party Verified Carbon Standard Credits that support renewable energy and carbon reduction technologies to help fight climate change. When you choose M/PACT products, you can be sure your choice is carbon neutral.



SCAN TO LEARN MORE ABOUT
OUR CARBON NEUTRAL PROGRAM

M/PACT™

M/PACT™
CARBON NEUTRAL PROGRAM

Investment

Today we invest through renewable energy credits, verified carbon offsets, and installing solar power at our Sydney manufacturing facility. We also continue to invest in more efficient manufacturing technologies and in local supply chains.

Materials

We believe material health is essential to enable circularity. The use of materials that don't contain harmful chemicals provides a critical pathway to end-of-life product recycling. Our carpet, LVT and entrance flooring tiles are recyclable.

Dematerialisation

We continue to support the advancement of a circular economy – one that uses less new raw materials and creates less waste. For example, we have created a portfolio of carpet tiles that use less raw material, reducing embodied carbon. We will continue to challenge ourselves and our supply chains to extend innovation in new technologies for dematerialisation.

Manufacturing

We leverage our global manufacturing and local supply chains to minimise carbon emissions. More efficient manufacturing and distribution not only reduces our global carbon footprint, it also has a direct positive impact on the communities we call home.

Wellness

Climate change directly impacts human health and wellness. Pollution. Natural disasters. Droughts. As a founding member of the Well Living Lab and a Well Portfolio Member, we aspire to design products that enhance well-being and quality of life of indoor spaces.

We will continue to do more to lower our carbon footprint.

The M/PACT™ program is long-term, because the fight to stop climate change will be a long one. As a global manufacturing company, we set 2025 goals that align with the United Nations Sustainable Development Goals. We push ourselves to meet our targets on Planet, Product, and People, including a 25% reduction in indexed greenhouse emissions by 2025. These 2025 goals are a benchmark for us to achieve more, faster. We encourage you to specify our carbon neutral products for all of your projects to ensure the climate change journey continues.

Together, we can make a positive **M/PACT™** on the world for generations.

* As calculated and verified scope A1-3 GWP through a ISO14025/ISO14040 compliant LCA and published in third party EPDs.

Milliken

Milliken



Self-sanitising Carpet

Integrated Infection Control



MGUARD+ treatment kills 99% of the SARS-CoV-2 virus within 2 hours of contact with Milliken PrintWorks™ carpet tiles.

MGUARD+ treatment kills 99% of *S. aureus*, *E. coli*, *K. pneumoniae* in 24 hours as per AATCC 174-2.

Duration of protection varies with use.

Powered by HealthGuard®.

Only available in Australia and New Zealand.

Declare.





WellBAC®

Milliken WellBAC® open cell foam cushion provides superior durability, appearance retention and cushioning.



Up to 24% greater underfoot comfort for enhanced ergonomics whilst standing.



Up to 50% improved acoustics for quieter, more productive spaces.



Industry leading moisture management with non-reactive backings to enhance the installation process.



3rd party Verified Red-List Free products for occupant and installer well-being.



Enhanced Indoor Air Quality (Low VOC) for improved occupant and installer well-being.

FACE FABRIC

Patterns and structures made up of nylon yarns with our state of the art tufting technology.

PRIMARY BACKING

The face yarn is tufted through a high quality non-woven textile. The structure of the textile holds the yarn in place acting as the primary backing.

PRECOAT

The precoat layer locks the tufted yarns in the primary backing to ensure good tuft bind strength between the yarns and the backing.

FIBERGLASS

A high quality fiberglass layer is embedded in the polyolefin compound to ensure dimensional stability of the tile.

SECONDARY BACKING

Proprietary Polyolefin compound layer formulated by Milliken R&D scientists to create a durable and stable tile. Our formulation does not contain PVC or plasticizers.

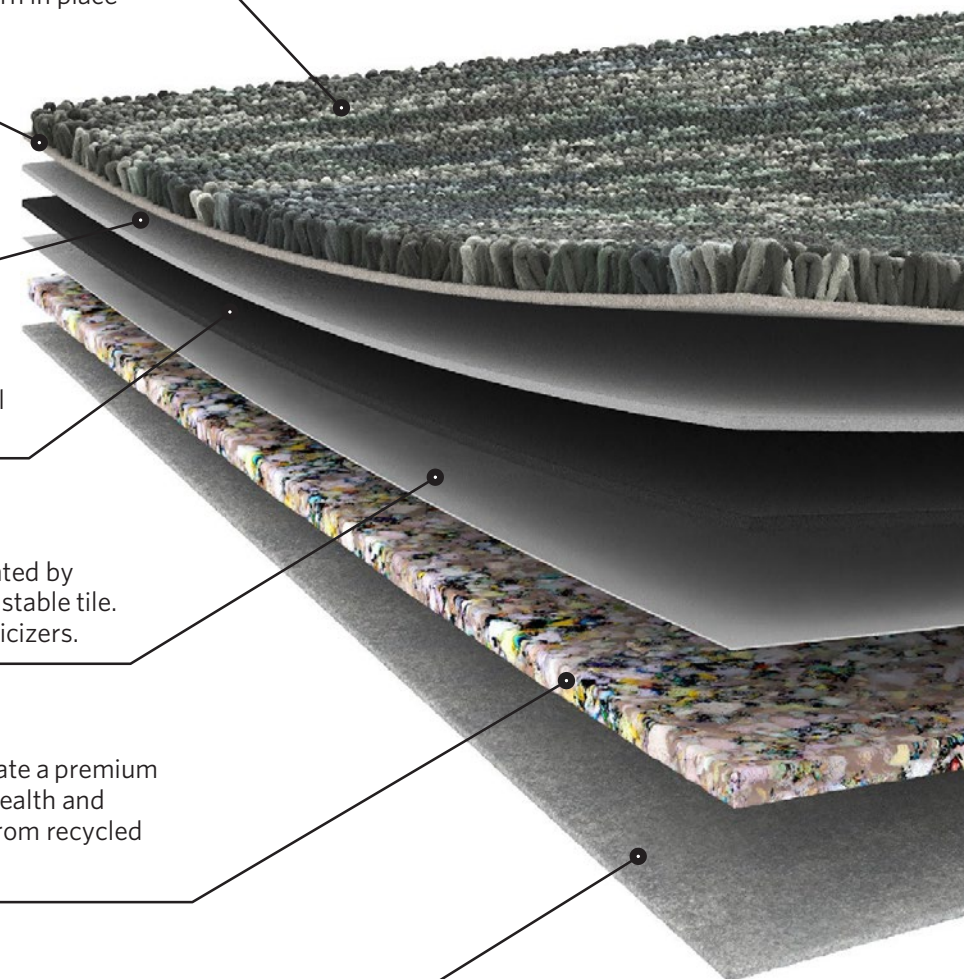
PREMIUM CUSHION

WellBAC® Comfort and Comfort Plus incorporate a premium cushion layer, designed to provide additional health and wellness benefits. Milliken's cushion is made from recycled polyurethane foam.

FELT BACK

A protective non-woven textile layer provides a breathable non-reactive finish. It enhances health and wellness.

Milliken's standard cushion backing system — offering enhanced underfoot comfort, acoustic and wear performance.



Milliken™

MOMENTUM

Figment | Mythology

SPECIFICATION



When you choose M/PACT™ products, you can be sure your choice is carbon neutral. M/PACT™ carbon neutral products offset the raw materials and manufacturing carbon footprint* by using 3rd party Verified Carbon Standard Credits that support renewable energy and carbon reduction technologies to help fight climate change.
*as calculated and verified through a ISO14025/ISO14040 compliant LCA and published in third party EPD.

Standard Backing	Cushion Backing WellBAC® Comfort (PVC FREE) (Non-Reactive Cushion Backing)
Acoustic Value	Noise Reduction Coefficient - NRC ≥ 0.25 Impact Sound Pressure Level - Ln,w ≤ 47dB
Concrete Slab Moisture Mitigation	Site-Related Solutions (SRS). Milliken Cushion backed tile + Non-Reactive Standard adhesive means installation 60 days after a new concrete pour, fully warranted no moisture testing required. Refer millikenfloors.com.au
Antiviral Antibacterial	MGUARD+ Antiviral and Antibacterial Treatment. Further information refer to millikenfloors.com.au

Construction	Tufted, Textured Loop	Lightfastness (AATCC16E)	≥ 4.0 at 80 Hours
Tile Size	50cm x 50cm	Static Electricity	≤ 3.5KV
Yarn Type	Milliken Certified 100% Nylon	(AATCC-134) 20% R.H., 70°F	
Stain Resist	StainSmart®	Indoor Air Quality	≤ 0.5mg/m³ (GLP0793)
Soil Release		CRI Green Label Plus™	
Dye Method	PrintWorks™	VOC	Pass (ISO 10580:2010)
Gauge	1/12	ACCS Grading	CEHD 4*, REHD2 6*, Suitable for Stairs
Stitches Per Inch	11.2	Environmental	ECS Grading - Level 4 (Certificate No. 20166) Declare - 3rd Party Verified RED LIST FREE Cradle to Cradle - Silver Carbon Neutral Environmental Product Declaration (EPD) Health Product Declaration (HPD)
Tufts	134/in² (2,081/100cm²)		
Recyclable	100%		
Nominal Total Thickness	8.2mm		
Nominal Total Weight	92.9 oz/yd² (3,150g/m²)		
Nominal Pile Thickness	2.1mm		
Flammability (Radiant Panel Test)	CHF/CRF = 5.2kW/m², Smoke value = 182%.min		

Recommended Installation Method(s)	Monolithic Brick (Horizontal)
Recommended Area of Use	Commercial Extra Heavy Duty
Warranties	15-year Wear Warranty 15-year Dimensional Stability Warranty 15-year Anti-Static Warranty 15-year Castor Chair Wear Warranty



Alliance
Founding
Member

Declare.



Milliken

Queensland University of Technology, Q Block, Level 2,
Gardens Point Campus, Brisbane | RAL Architects
Photographer: Christopher Federick Jones
Figment in Aura | FIG104 | Monolithic Installation

Australia:
Toll Free: 1800 668 372
New Zealand:
Toll Free: 0800 668 372
www.millikenfloors.com.au
(Australia & New Zealand)

This WellBAC® cushion-back carpet tile product is covered by one or more patents, published applications and/ or patents pending. Specifications are subject to normal manufacturing tolerances and may be changed without prior notice. Copies of actual test results are available upon request.

© 2022 Milliken & Company | Design © Milliken & Company