



BEYOND CHROMA

Milliken™



There are colours we can't see, but they're connected to the ones we can. There's a connection between everything.

Wayne Shorter

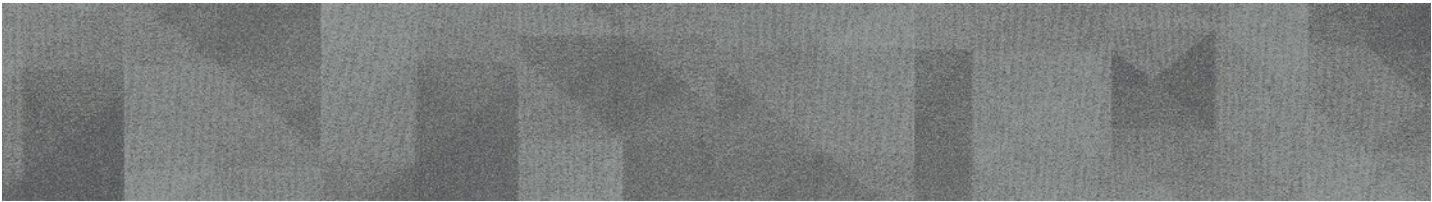
BEYOND CHROMA

Colour awakens emotions. It can initiate elements of fun, dynamic, powerful, subtle and harmonious attributes. It plays a pivotal role impacting the vibrancy of life experiences, influencing our mood, mind and the perception of the world.

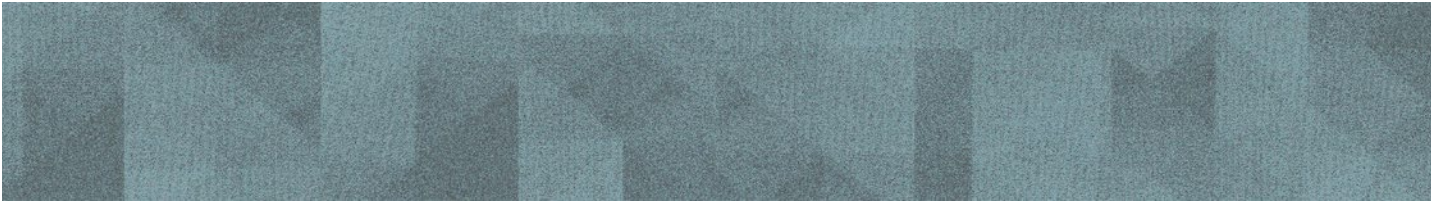
Highly sensory, colour has become a language of its own in the interior space, that helps to apply distinctive ambiances and atmospheric conditions into our work and home environments.

The Beyond Chroma collection encapsulates the experiential effects of colour, bringing the vibrancy into your interiors through different shades and tones, evoking individualistic human responses.

MULTI-TILE REPEATS



CHROMA IN MINK | CMA173



CHROMA IN DUCK EGG | CMA172



CHROMA IN PEPPERMINT | CMA162-101



Context Architects Head Office, New Zealand
Chroma in Herbal (CMA230-125), Reef (CMA132), Soft Sun (CMA188-111), Turquoise (CMA229),
Charcoal (CMA118) and Sea Blue (CMA157) |
Monolithic Installation





University of South Australia, Mawson Lakes | Design Inc & Pascale Constructions | Photographer: David Seivers
 Chroma in Sage | CMA64-62 | Monolithic Installation



University of South Australia, Mawson Lakes | Design Inc & Pascale Constructions | Photographer: David Seivers
 Left to Right: Exceed in Speed, Desert (SPD144) and Beyond Chroma in Chroma, Sage (CMA64-62) | Monolithic Installation



DGSE Tautanga Studio, New Zealand | Designgroup Stapleton Elliot | Photographer: Jason Mann
Chroma in Charcoal | CMA118 | Monolithic Installation



Kimberley Clark Head Office, New South Wales | Gensler
Top Left: Chroma in Charcoal | CMA118,
Bottom Left to Right: Chroma in Brighton Beach (CMA4) and Herbal (CMA230-125) | Monolithic Installation



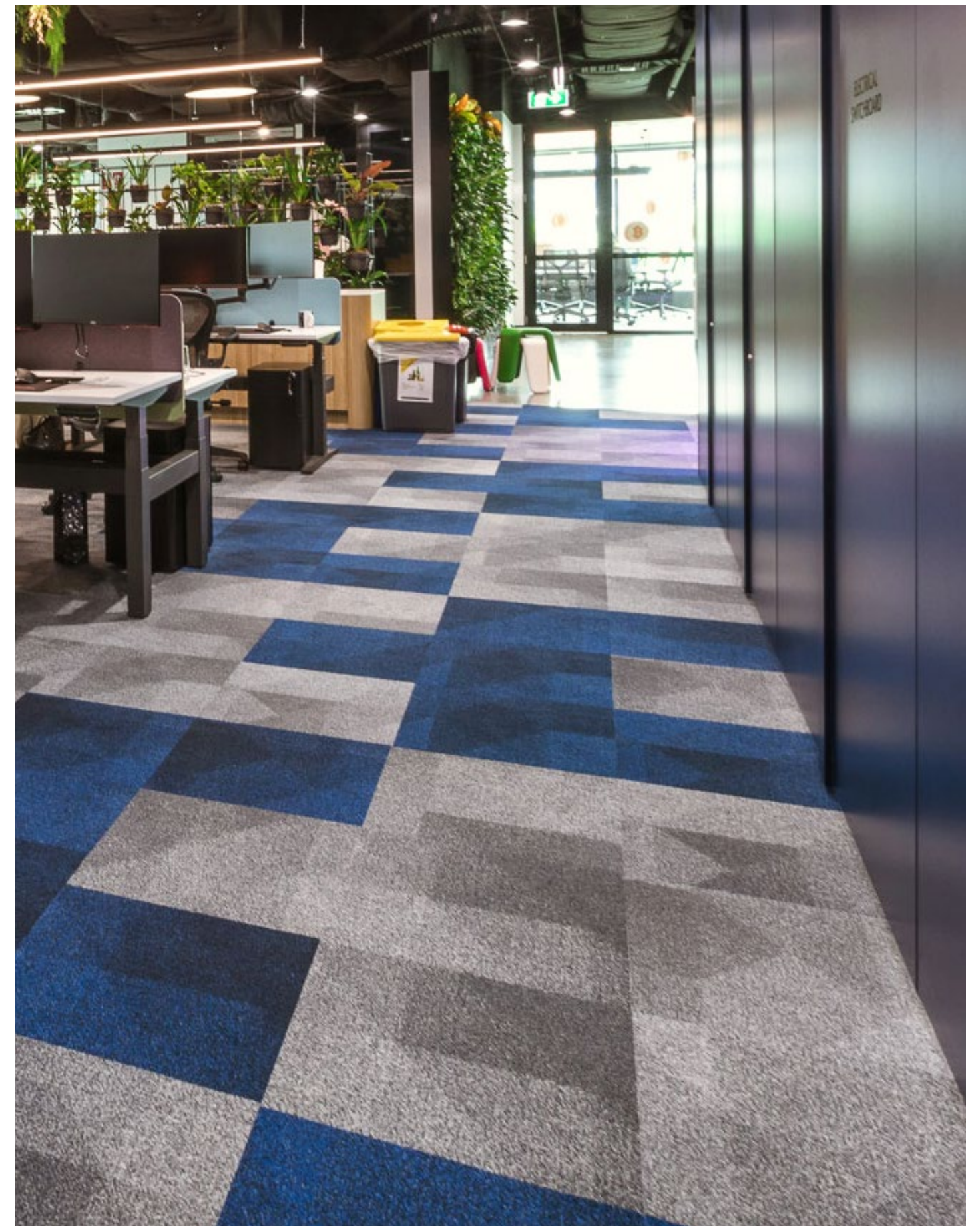
Kimberley Clark Head Office, New South Wales | Gensler
 Chroma in Sea Blue | CMA157 | Monolithic Installation



Kimberley Clark Head Office, New South Wales | Gensler
 Left to Right: Chroma in Brighton Beach (CMA4) and Chroma in Charcoal (CMA118) | Monolithic Installation



SWFTX Head Office, Queensland | Growth Australia | Photographer: Kat O'Malley
Chroma in Peacock | CMA196-198 | Monolithic Installation



SWFTX Head Office, Queensland | Growth Australia | Photographer: Kat O'Malley
Chroma in Outer Reef (CMA123) and Mink (CMA173) | Monolithic Installation



CBC Fremantle, 223 Hight Street, Western Australia | Site Architecture Studio | Photographer: Dion Robeson
 Chroma in Turquoise (CMA229), Carbon (CMA174), Duck Egg (CMA172) and Cool (CMA172-132) | Monolithic Installation



St John's School in Otara, Auckland, New Zealand | Eclipse Architecture | Photographer: Mark Scowen
Left to Right: Chroma in Sea Blue (CMA157), Paving Stone (CMA218) and in Grape (CMA181) | Monolithic Installation

COLOURWAY



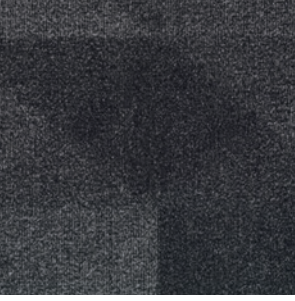
CMA133 NIGHT SKY



CMA118 CHARCOAL



CMA182-131 SQUIDS INK



CMA174 CARBON



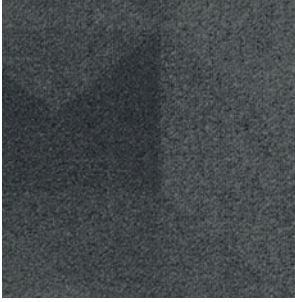
CMA96 BROWN BEAR



CMA124 FOSSIL



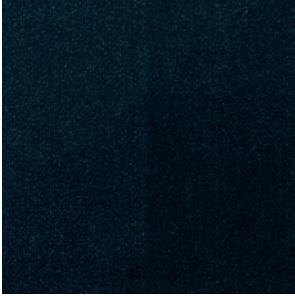
CMA152-145 GRAPHITE



CMA165 SMOKE



CMA173 MINK



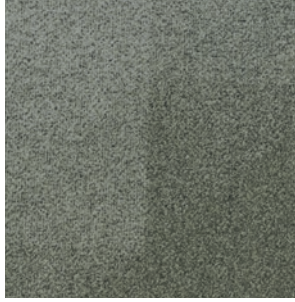
CMA228 ANTARCTIC



CMA212 LINSEED



CMA144 CHALK



CMA218 PAVING STONE



CMA217 STONE



CMA229 TURQUOISE

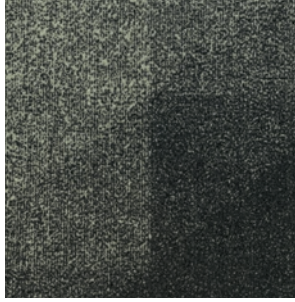
COLOURWAY



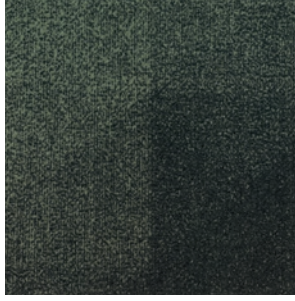
CMA14 SAND



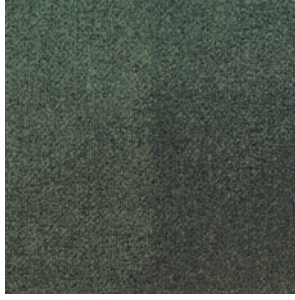
CMA21 BUFF



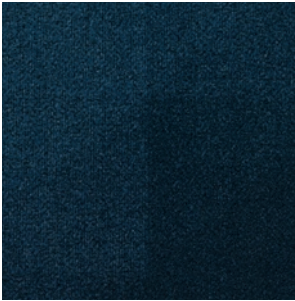
CMA4 BRIGHTON BEACH



CMA240-101 POWDERED GUM



CMA240 GUMLEAF



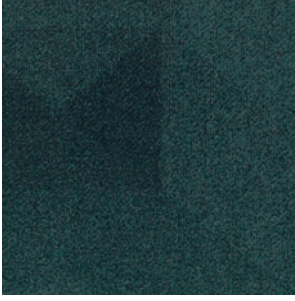
CMA123 OUTER REEF



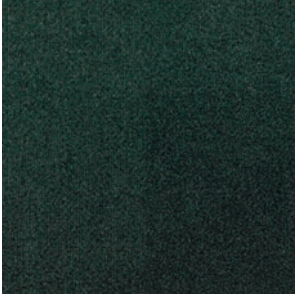
CMA73 BIRO BLUE



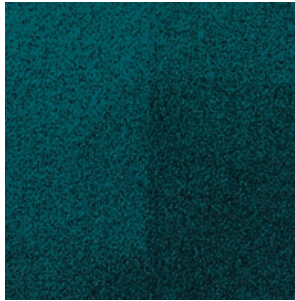
CMA108 ANCHOR



CMA161 TEAL



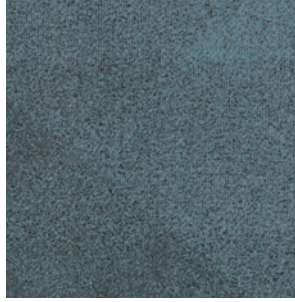
CMA230-125 HERBAL



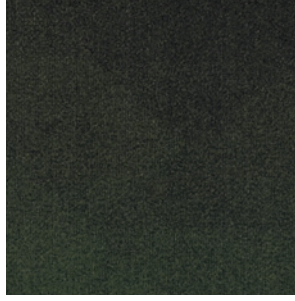
CMA196-198 PEACOCK



CMA157 SEA BLUE



CMA172 DUCK EGG

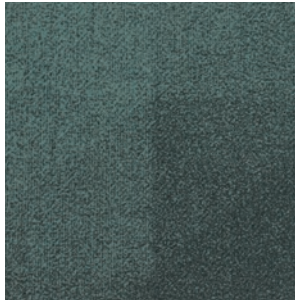


CMA64-62 SAGE

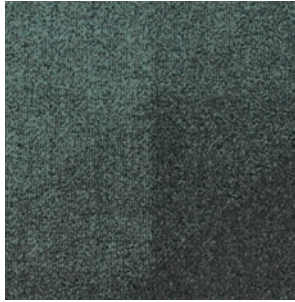


CMA230 PEATMOSS

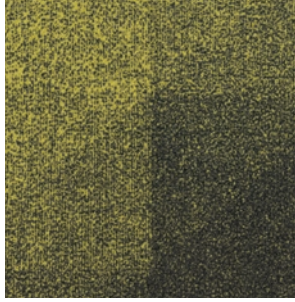
COLOURWAY



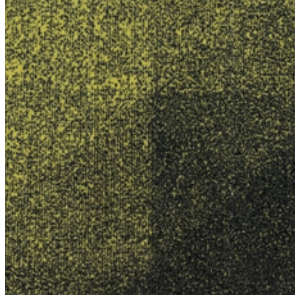
CMA172-132 COOL



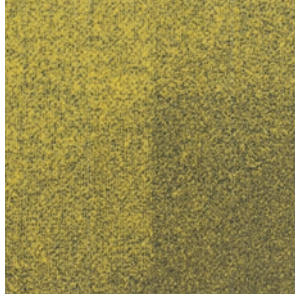
CMA172-139 EBBING TIDE



CMA188-231 SUNBURST



CMA188 LIME



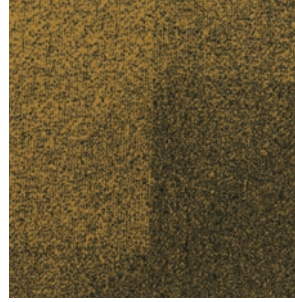
CMA188-111 SOFTSUN



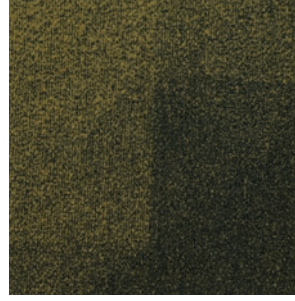
CMA162-101 PEPPERMINT



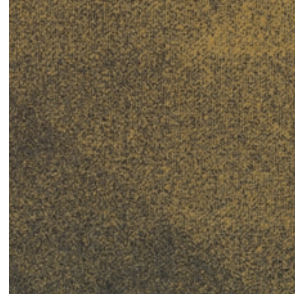
CMA162 EMERALD



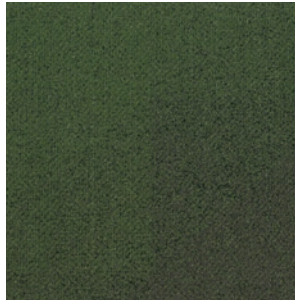
CMA231-184 BRASSED OFF



CMA65-134 AUTUMN



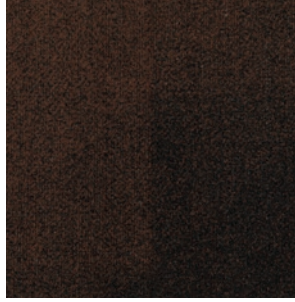
CMA134-75 MUSTARD



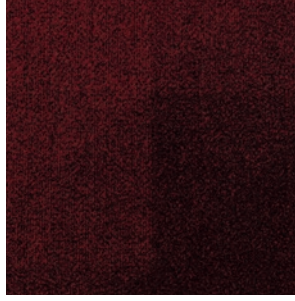
CMA141 MAMBA GREEN



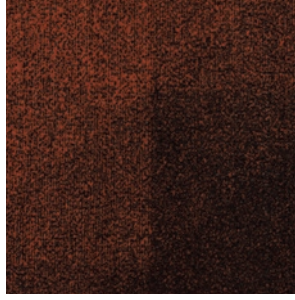
CMA166 TROPICS



CMA701-33 RUSSET

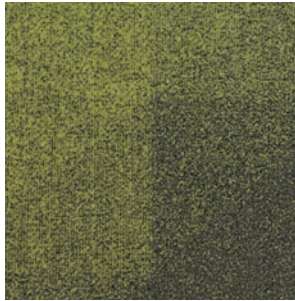


CMA169-102 CHILLIE



CMA33 SAPPHIRE

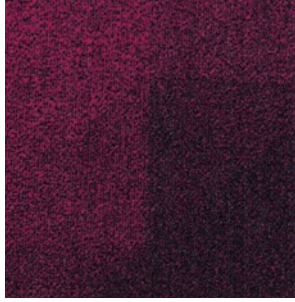
COLOURWAY



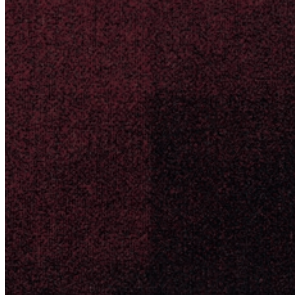
CMA188-166 CITRUS



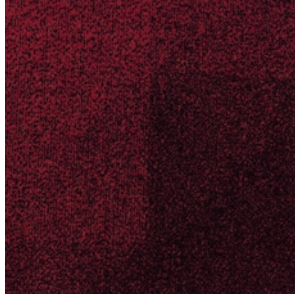
CMA137-110 VIOLET



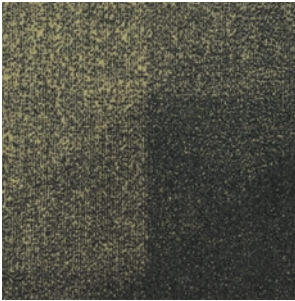
CMA168 SCARLET



CMA102 AUBURN



CMA169 GARNET



CMA18 OPEN SESAME



CMA263 BLACKCURRANT



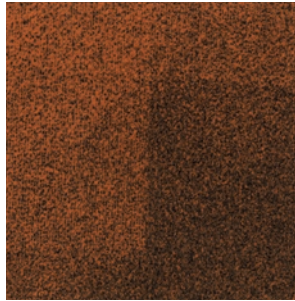
CMA137 ORCHID



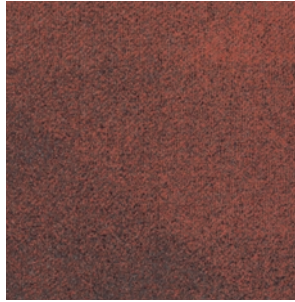
CMA253 RHINESTONE



CMA181 GRAPE



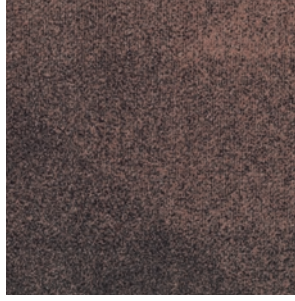
CMA89-33 QUINCE



CMA148-147 CORAL



CMA261 ROSETTA



CMA146-147 BLUSH



CMA149 DUSKY



Canon Medical System Head Office, New South Wales | Crest Interiors
Chroma in Garnet | CMA169 | Monolithic Installation

Milliken supports the Property Industry Foundation

Milliken is a proud partner of the Property Industry Foundation, an organisation devoted to alleviating the problem of youth homelessness. The Foundation builds homes for homeless youth and provides ongoing support for homes where young people can rebuild their lives.

Homelessness is one of the most severe forms of disadvantage and social exclusion that any young person can experience. Youth homelessness affects 44,000 young Australians every night and understanding the scale of this issue, we were compelled to get involved and help in the great work the foundation is doing.

The Beyond Chroma collection is part of the 'Product Pathway'. The 'Product Pathway' is a unique fundraising model created by Milliken for the Property Industry Foundation where a contribution from every dollar of sales is donated to the foundation to build homes for homeless youth. The aim of the product pathway is to provide a regular and sustainable fundraising stream and with your help, we can keep assisting the Property Industry Foundation in tackling the issue of youth homelessness.

The Foundation's mission is to make a tangible difference to the serious and persistent problem of youth homelessness by partnering with respected charities to build safe environments and support charity managed initiatives focused on education, employment and well-being.

For Homeless Youth

Milliken



www.millikenfloors.com.au

www.pif.com.au

Milliken



Self-sanitising Carpet

Integrated Infection Control



MGUARD+ treatment kills 99% of the SARS-CoV-2 virus within 2 hours of contact with Milliken PrintWorks™ carpet tiles.

MGUARD+ treatment kills 99% of *S. aureus*, *E. coli*, *K. pneumoniae* in 24 hours as per AATCC 174-2.

Duration of protection varies with use.

Powered by HealthGuard®.

Only available in Australia and New Zealand.

Declare.



WellBAC®

Milliken WellBAC® open cell foam cushion provides superior durability, appearance retention and cushioning.



Up to 24% greater underfoot comfort for enhanced ergonomics whilst standing.



Up to 50% improved acoustics for quieter, more productive spaces.



Industry leading moisture management with non-reactive backings to enhance the installation process.



3rd party Verified Red-List Free products for occupant and installer well-being.



Enhanced Indoor Air Quality (Low VOC) for improved occupant and installer well-being.

FACE FABRIC

Patterns and structures made up of nylon yarns with our state of the art tufting technology.

PRIMARY BACKING

The face yarn is tufted through a high quality non-woven textile. The structure of the textile holds the yarn in place acting as the primary backing.

PRECOAT

The precoat layer locks the tufted yarns in the primary backing to ensure good tuft bind strength between the yarns and the backing.

FIBERGLASS

A high quality fiberglass layer is embedded in the polyolefin compound to ensure dimensional stability of the tile.

SECONDARY BACKING

Proprietary Polyolefin compound layer formulated by Milliken R&D scientists to create a durable and stable tile. Our formulation does not contain PVC or plasticizers.

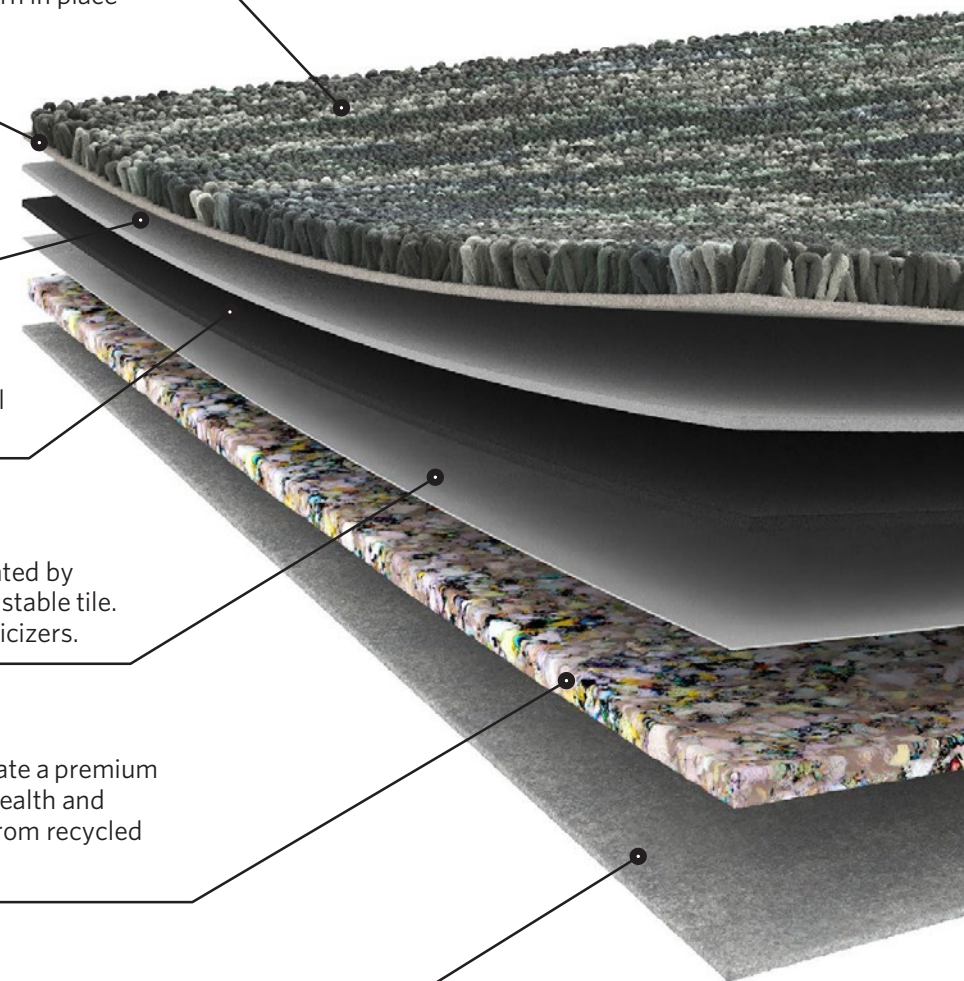
PREMIUM CUSHION

WellBAC® Comfort and Comfort Plus incorporate a premium cushion layer, designed to provide additional health and wellness benefits. Milliken's cushion is made from recycled polyurethane foam.

FELT BACK

A protective non-woven textile layer provides a breathable non-reactive finish. It enhances health and wellness.

Milliken's standard cushion backing system — offering enhanced underfoot comfort, acoustic and wear performance.



BEYOND CHROMA

Chroma

SPECIFICATION



When you choose M/PACT™ products, you can be sure your choice is carbon neutral. M/PACT™ carbon neutral products offset the raw materials and manufacturing carbon footprint* by using 3rd party Verified Carbon Standard Credits that support renewable energy and carbon reduction technologies to help fight climate change.
*as calculated and verified through a ISO14025/ISO14040 compliant LCA and published in third party EPD.

Standard Backing	Cushion Backing WellBAC® Comfort (PVC FREE) (Non-Reactive Cushion Backing)
Acoustic Value	Noise Reduction Coefficient - NRC ≥ 0.25 Impact Sound Pressure Level - $L_{n,w} \leq 47dB$
Concrete Slab Moisture Mitigation	Site-Related Solutions (SRS). Milliken Cushion backed tile + Non-Reactive Standard adhesive means installation 60 days after a new concrete pour, fully warranted no moisture testing required. Refer millikenfloors.com.au
Antiviral Antibacterial	MGUARD+ Antiviral and Antibacterial Treatment. Further information refer to millikenfloors.com.au

Construction	Tufted, Textured Loop	Lightfastness (AATCC16E)	≥ 4.0 at 80 Hours
Tile Size	50cm x 50cm	Static Electricity	$\leq 3.5KV$
Yarn Type	Milliken Certified 100% Nylon	(AATCC-134) 20% R.H., 70°F	
Stain Resist	StainSmart®	Indoor Air Quality	$\leq 0.5mg/m^3$ (GLP0793)
Soil Release		CRI Green Label Plus™	
Dye Method	PrintWorks™	VOC	Pass (ISO 10580:2010)
Gauge	1/10	ACCS Grading	CMD 2*, REHD15*, Suitable for Stairs
Stitches Per Inch	14.4	Environmental	ECS Grading - Level 4 (Certificate No. 20145)
Tufts	144/in ² (2,230/100cm ²)		Declare - 3rd Party Verified RED LIST FREE
Recyclable	100%		Cradle to Cradle - Silver
Nominal Total Thickness	8.4mm		Carbon Neutral
Nominal Total Weight	90.3 oz/yd ² (3,062g/m ²)		Environmental Product Declaration (EPD)
Nominal Pile Thickness	2.8mm		Health Product Declaration (HPD)
Flammability (Radiant Panel Test)	CHF/CRF = 6.3kW/m ² , Smoke value = 136%.min		

Recommended Installation Method(s)	Monolithic Brick (Horizontal)
Recommended Area of Use	Commercial Extra Heavy Duty
Warranties	15-year Wear Warranty 15-year Dimensional Stability Warranty 15-year Anti-Static Warranty 15-year Castor Chair Wear Warranty



Alliance
Founding
Member

Declare.



Milliken

Kimberley Clark Head Office, New South Wales | Gensler
Top to Bottom Left: Chroma in Charcoal | CMA118,
and Herbal (CMA230-125) | Monolithic Installation

Australia:
Toll Free: 1800 668 372
New Zealand:
Toll Free: 0800 668 372
www.millikenfloors.com.au
(Australia & New Zealand)

This WellBAC® cushion-back carpet tile product is covered by one or more patents, published applications and/ or patents pending. Specifications are subject to normal manufacturing tolerances and may be changed without prior notice. Copies of actual test results are available upon request.

© 2022 Milliken & Company | Design © Milliken & Company