



ARCTIC SURVEY

Milliken

ARCTIC SURVEY

Ice is ever changing. Layers form over centuries from the seasons’ ebb and flow. Exploring this frigid environment requires the heart of an explorer and its constant yearning for discovery. The Arctic offers a place of solitude and a counterbalance to an idea of natural beauty.

The Arctic Survey collection offers a series of bold textures inspired by the movement, structures, and evolving forms of ice in the Arctic. Three patterns vary in movement and scale, formed by varying depths of an all loop, solution dyed construction. The result is a new and elegant visual landscape for the floor.



ISOTHERM IN AVALANCHE
IST108-13



SHACKLETON IN AVALANCHE
SHK108-13



EXPEDITION IN AVALANCHE
EXP108-13







AFCA Head Office, New South Wales | Gray Puksand
Photographer: Shannon McGrath



AFCA Head Office, New South Wales | Gray Puksand
Photographer: Shannon McGrath



(Alternating bands) Shackleton (SKH119-27) and Isotherm (IST119-27) in Black Ice | Ashlar (Vertical) Installation



Expedition in Permafrost | EXP67-59 | Ashlar (Vertical) Installation



AFCA Head Office, New South Wales | Gray Puksand
Photographer: Shannon McGrath



QUT College, P Block Kelvin Grove Campus, Queensland | PDT Architects | Photographer: Scott Burrows
Water Yuludarla in Jagun in Blush (JAG146-100) and Arctic Survey in Isotherm in Sub Zero (IST174-119)
Monolithic and Ashlar (Vertical) Installation respectively

COLOURWAY

Isotherm



IST15-121 MIGRATE



IST48-122 SLEET



IST124-94 HIBERNATE



IST122-120 THAW



IST93-178 TUNDRA



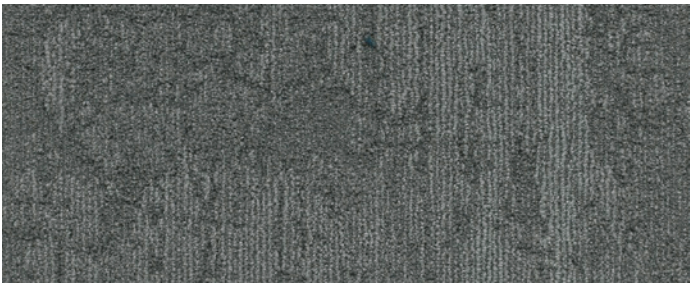
IST67-59 PERMAFROST



IST204-171 FROSTBITE



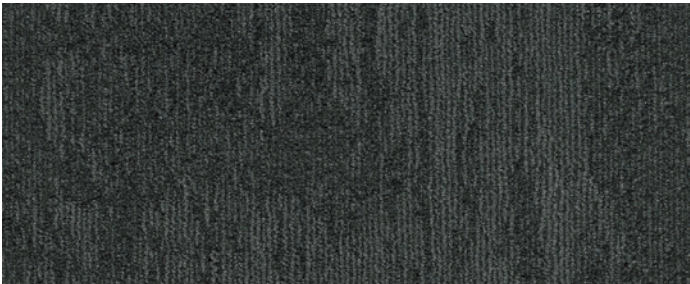
IST108-122 ICE CAP



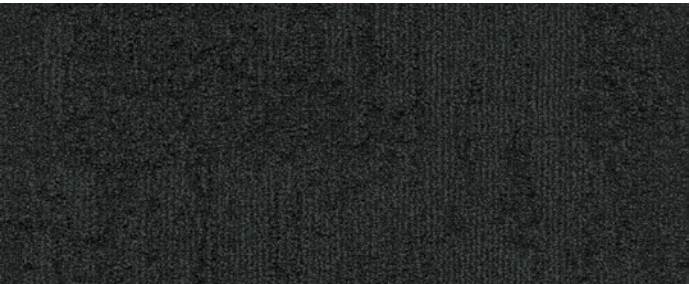
IST108-13 AVALANCHE



IST171-25 GREAT MELT



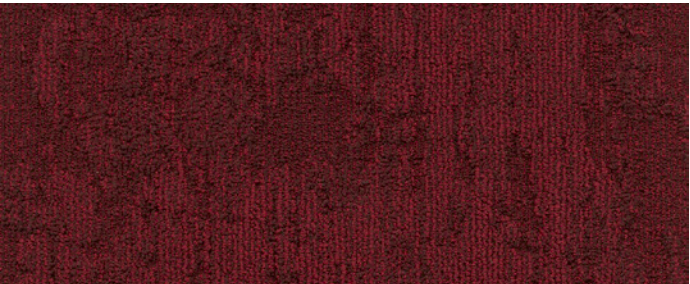
IST174-119 SUB ZERO



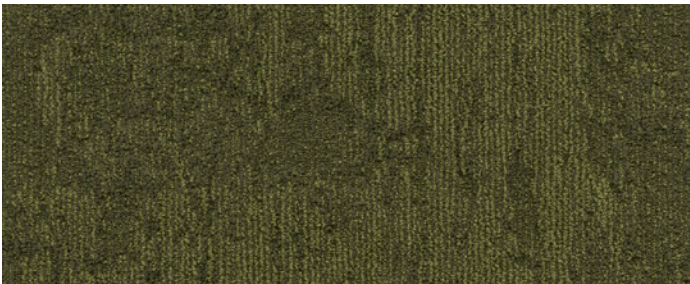
IST119-27 BLACK ICE



IST111-134 MIDNIGHT SUN



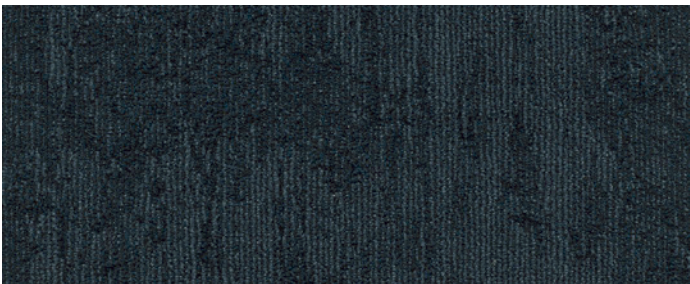
IST109-60 FIRESIDE



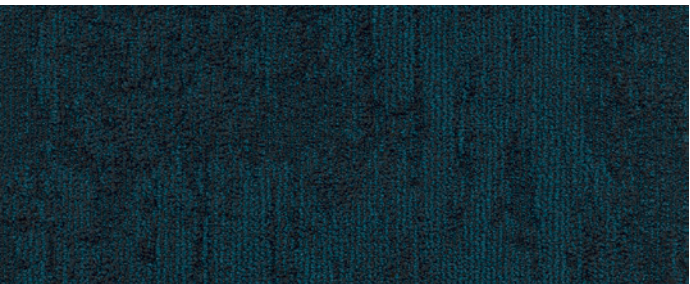
IST45-28 SEDGES



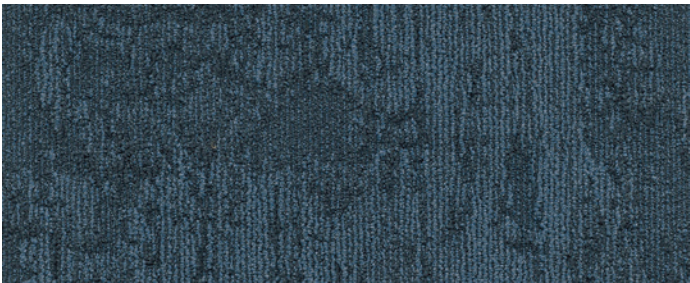
IST203-230 EVERGREEN



IST52-107 POLAR NIGHT



IST229-107 SEA ICE



IST52-126 GLACIAL

COLOURWAY

Shackleton



SHK15-121 MIGRATE



SHK48-122 SLEET



SHK124-94 HIBERNATE



SHK122-120 THAW



SHK93-178 TUNDRA



SHK67-59 PERMAFROST



SHK204-171 FROSTBITE



SHK108-122 ICE CAP



SHK108-13 AVALANCHE



SHK171-25 GREAT MELT



SHK174-119 SUB ZERO



SHK119-27 BLACK ICE



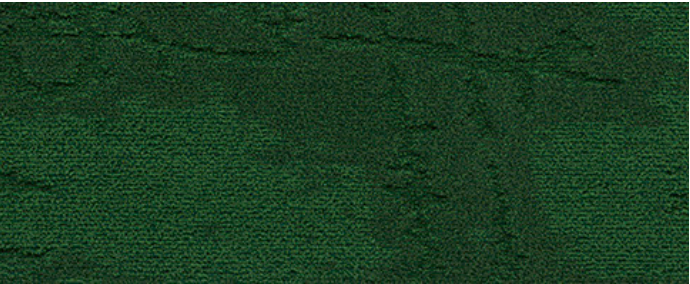
SHK111-134 MIDNIGHT SUN



SHK109-60 FIRESIDE



SHK45-28 SEDGES



SHK203-230 EVERGREEN



SHK52-107 POLAR NIGHT



SHK229-107 SEA ICE



SHK52-126 GLACIAL

COLOURWAY

Expedition



EXP15-121 MIGRATE



EXP48-122 SLEET



EXP174-119 SUB ZERO



EXP119-27 BLACK ICE



EXP124-94 HIBERNATE



EXP122-120 THAW



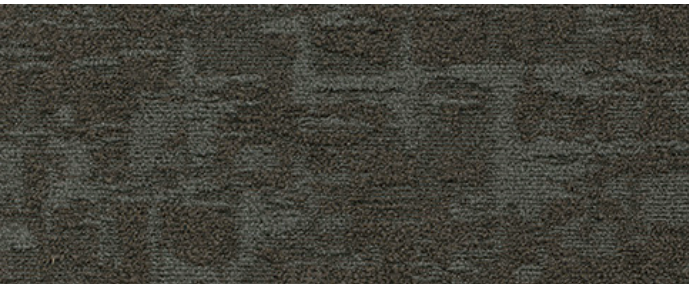
EXP111-134 MIDNIGHT SUN



EXP109-60 FIRESIDE



EXP93-178 TUNDRA



EXP67-59 PERMAFROST



EXP45-28 SEDGES



EXP203-230 EVERGREEN



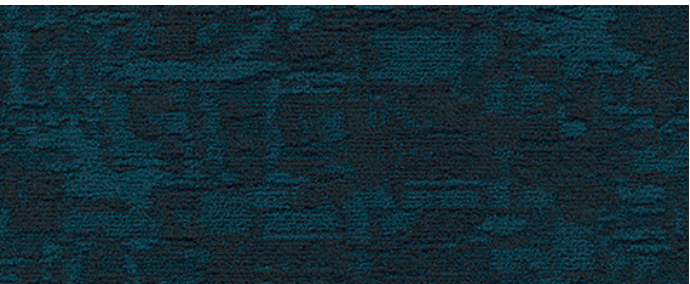
EXP204-171 FROSTBITE



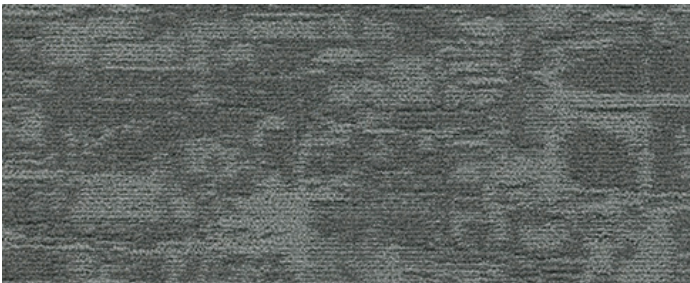
EXP108-122 ICE CAP



EXP52-107 POLAR NIGHT



EXP229-107 SEA ICE



EXP108-13 AVALANCHE



EXP171-25 GREAT MELT



EXP52-126 GLACIAL

ARCTIC SURVEY

Isotherm | Shackleton | Expedition

SPECIFICATION



When you choose M/PACT™ products, you can be sure your choice is carbon neutral. M/PACT™ carbon neutral products offset the raw materials and manufacturing carbon footprint* by using 3rd party Verified Carbon Standard Credits that support renewable energy and carbon reduction technologies to help fight climate change.

*as calculated and verified through a ISO14025/ISO14040 compliant LCA and published in third party EPD.

Standard Backing	Cushion Backing WellBAC® Comfort (PVC FREE) (Non-Reactive Cushion Backing)
Acoustic Value	Noise Reduction Coefficient - NRC ≥ 0.25 Impact Sound Pressure Level - Ln,w ≤ 47dB
Concrete Slab Moisture Mitigation	Site-Related Solutions (SRS). Milliken Cushion backed tile + Non-Reactive Standard adhesive means installation 60 days after a new concrete pour, fully warranted no moisture testing required. Refer millikenfloors.com.au

Construction	Tufted, Multi-Level Loop	Lightfastness (AATCC 16E)	≥ 4.0 at 80 Hours
Tile Size	25cm x 100cm	Static Electricity	≤ 3.5KV
Yarn Type	100% Solution Dyed Nylon	(AATCC-134) 20% R.H., 70°F	
Stain Resist	Built-In Protection	Indoor Air Quality	≤ 0.5mg/m³ (GLP7205)
Soil Release		CRI Green Label Plus™	
Dye Method	Solution Dyed	VOC	Pass (ISO 10580:2010)
Gauge	1/12	ACCS Grading	Commercial Extra Heavy Duty & Stairs (CEHD(S) 4*), Residential Extra Heavy Duty & Stairs (REHD2 (S) 6*)
Stitches Per Inch	Isotherm Shackleton: 12.6 Expedition: 12.4	Environmental	ECS Grading - Level 4 (Isotherm Shackleton: Certificate No. 17136, Expedition: Certificate No. 17135)
Tufts	Isotherm Shackleton: 151/in² (2,339/100cm²) Expedition: 149/in² (2,308/100cm²)		Declare - 3rd Party Verified RED LIST FREE Cradle to Cradle - Silver Carbon Neutral Environmental Product Declaration (EPD) Health Product Declaration (HPD)
Recyclable	100%		
Nominal Total Thickness	Isotherm Shackleton: 10.7mm Expedition: 9.7mm		
Nominal Total Weight	Isotherm Shackleton: 108.0 oz/yd² (3,662 g/m²) Expedition: 107.0 oz/yd² (3,628 g/m²)		
Nominal Pile Thickness	Isotherm Shackleton: 5.33mm Expedition: 4.83mm		
Flammability (Radiant Panel Test)	Isotherm Shackleton: CHF/CRF = 5.8kW/m², Smoke value = 359%.min Expedition: CHF/CRF = 6.9kW/m², Smoke value = 302%.min		

Recommended Installation Method(s)	Isotherm Shackleton Expedition: Ashlar (Vertical)
Recommended Area of Use	Commercial Extra Heavy Duty
Warranties	15-year Wear Warranty 15-year Dimensional Stability Warranty 15-year Anti-Static Warranty 15-year Castor Chair Wear Warranty



Alliance
Founding
Member

Declare.



Milliken

Left to Right: Expedition, Shackleton, and
Isotherm in Avalanche

Australia:
Toll Free: 1800 668 372
New Zealand:
Toll Free: 0800 668 372
www.millikenfloors.com.au
(Australia & New Zealand)

This WellBAC® cushion-back carpet tile product is covered by one or more patents, published applications and/ or patents pending. Specifications are subject to normal manufacturing tolerances and may be changed without prior notice. Copies of actual test results are available upon request.

© 2022 Milliken & Company | Design © Milliken & Company