

A modern architectural styled panel with striking vertical pickets.

[View miproducts listing](#)



Level of assurance needed to demonstrate NZ Building Code Compliance

Supporting documentation should include technical information by manufacturer and either a BRANZ or independent Appraisal or CodeMark



Edgesmith confirms that this minimum level of assurance has been met or exceeded by the following:

OBD Consultants

[Producer Statement 1 The Finn Plated Balustrade - 200676](#)



The following information has been provided by Edgesmith demonstrating how this product complies with the [Building Product Information Requirements](#).

Technical Statement

Product Class

CLASS 2

Product Description

The evenly spaced vertical pickets provide a clever masking effect for approaching traffic from either end of the fence line while allowing visibility from the inside out. Durable corrosion resistant aluminium will ensure this panel is the envy of the neighbourhood. 1.0m high offered as a balustrade panel meeting the NZ Building Code and regulations for residential and commercial applications. Powder coated in a wide range of Dulux colours.

Vertical Pickets : 65 x 16mm RHS
Picket Gaps: 65mm gaps
Horizontal Rails : 40 x 40mm SHS
Standard Width : 2.344m
Material : Aluminium T6063-T5
Heights : 1.0M, 1.2M, 1.5M, 1.8M

Various gate options available to match The Finn Panel that can be coupled with Europe's leading Automation Brand 'Roger Technologies'.

All supported by our limited warranty. Refer to web site for details.

Scope of use

- Balustrade Fencing for residential homes, apartments, aged care and commercial applications.
- Pool Fencing.
- Boundary Fencing.
- Infill panels on block walls.
- Retaining walls.
- Landscape fencing.

New Zealand Building Code (NZBC)

The product will, if employed in accordance with the supplier's installation and maintenance requirements, assist with meeting the following provisions of the building code:

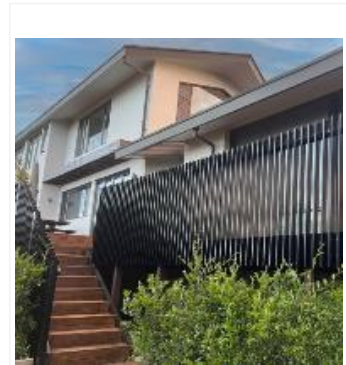
- **Clause B1 Structure:** Performance B1.3.1, B1.3.2
 - AS/NZS1170.0:2001, 2 and 5
 - AS/NZS 664:1997
- **Clause B2 Durability:** Performance B2.3.1, B2.3.1(a)
 - AS/NZS 1170.0:2002
 - SNZ TS 3404:2018
 - AS/NZS 2312.1:2014

Evidence

The product meets the requirements set out in the following documents, or relevant parts of cited standards within the documents:

Edgesmith PS1 for The Finn Balustrade Panel is readily available on request or via the website.

Supporting Evidence



masterspec partner

Company Contact Details



Company: Edgesmith
Physical Address: 20 Anvil Road, Silverdale, Auckland
Postal Address: PO Box 120, Silverdale, Auckland
Telephone: 64 09 4274980
Email: crew@edgesmith.co.nz
Website: www.edgesmith.co.nz

The product has and can make available the following additional evidence to support the above statements:



OBD Consultants

[Producer Statement 1 The Finn Plated Balustrade - 200676](#)

Use in Service History

The Finn Panel has been made and supplied by Edgesmith for 6 years.

Product Criteria

Design requirements

The Finn panel as a balustrade comes in 2 options.

The first option is as a panel between posts. The design of the panel creates a seamless connection from panel to post giving the illusion that there are no posts at all. This is achieved by the 65mm gaps between the verticals being paired with 65mm posts and the panel being attached against the post using our stainless steel rail bracket.

The second option is our plated panel. This design uses a 300mm x 6/8mm plate with 40mm x 40mm top rail. This is then fixed to the face of the deck or balcony boundary joists.

Installation requirements

Installation should be in accordance with the PS1.

Maintenance requirements

Half-Yearly - Wash down all exposed metal work that is not in a fully interior environment.

5-Yearly - Inspect and repair sealant that encloses fixings

10-Yearly - Check exposed timber fixings for corrosion, repair as required

25-Yearly - Inspect structural steel, exposed timber and reinforced concrete that comes into contact with balustrade, repair or replace as required.

Warrantees

Comes with up to a 5 year warranty. Refer to warranty for guidance.

Building Product Information Requirements

Manufacturer

Legal Trading Name:

Edgesmith

Business Email:

crew@edgesmith.co.nz

Company Website:

www.edgesmith.co.nz

Contact Number/s:

+64 09-4274980

0800 3362369

Product Identifier

FINN-BAL BALUSTRADO WITH POSTS FINN-1.05-BAL PLATED BALUSTRADO

Warnings

This product has no warnings associated with it.



Date last validated: **23 May 2024**



Date last updated: **23 May 2024**