

EQUUS SOPREMA DUOTHERM Warm Roof & Deck Membrane

Product Technical Statement: 100193



Warm roof system composed of a vapour barrier, thermal insulation & 2-layers waterproofing membrane

[View miproducts listing](#)



Level of assurance needed to demonstrate NZ Building Code Compliance

Supporting documentation should include technical information by manufacturer and either an independent assessment or reference to an industry-based scheme

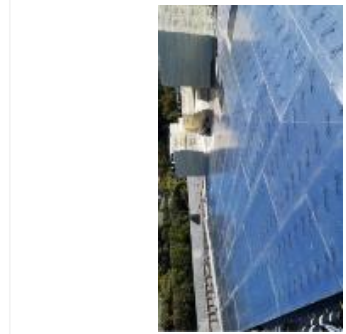


EQUUS SOPREMA confirms that this minimum level of assurance has been met or exceeded by the following:

CodeMark
[CMNZ70151](#)
BRANZ Appraisal
[1169, 685](#)



The following information has been provided by EQUUS SOPREMA demonstrating how this product complies with the [Building Product Information Requirements](#).



Technical Statement

Product Class

CLASS 1

Product Description

The DUOTHERM Warm Roof System is a light-weight, thermally insulated roof & deck waterproofing system consisting of the fire-retardant DUO two-layer membrane system applied over thermal insulation board and a vapour barrier. A warm roof system guarantees a continuous and efficient thermal resistance (R-value), negating condensation build up and creating energy savings.

The two-layer Duo membrane consists of a polyester-reinforced base sheet mechanically fastened to the insulation board, followed by a mechanically fastened cap sheet to form a 6.8mm thick system. This fire-retardant membrane system over the rigid insulation board provides a superior waterproofing system that is a lightweight waterproofing solution and resistant to the New Zealand climate.

Project specific specifications are designed to meet service requirements.

CodeMark Certified CMNZ70151

BRANZ Appraisal No. 685

Equus Industries provides warranties on all products when used in conjunction with the correct specification and applied by a certified Equus applicator.

BPIR information can be found in the TDS linked below

Scope of use

The system is designed for use on exposed flat roofs and decks, with UV and weather resistance suitable for any location and wind zone in New Zealand. Suitable over a range of substrates including plywood, concrete, metal, CLT and more. Suitable for new builds and refurbishments, residential and commercial construction.

DUOTHERM Warm Roofs can be overlaid with Fixplus or other approved pedestals, pavers and decking, Kraitec Step walkway tiles, or SOPRASOLAR non-penetrative solar panel supports or other approved supports. Suitable for other waterproofing applications with written approval by Equus Industries Ltd.

New Zealand Building Code (NZBC)

The product will, if employed in accordance with the supplier's installation and maintenance requirements, assist with meeting the following provisions of the building code:

- **Clause B2 Durability:** Performance B2.3.1(b)
DUOTHERM Warm Roofs have a durability of at least 15 years, and a life expectancy of 35 years, when installed with the correct specification, installation and maintenance. See CodeMark CMNZ70151, BRANZ Appraisal 1169, BRANZ Appraisal 685, DUO Durability Study.
- **Clause E2 External moisture:** Performance E2.3.1, E2.3.2, E2.3.7
Test data, together with in-service history in New Zealand and internationally, of the correctly installed DUOTHERM Warm Roofs membrane over correctly designed and constructed substrates, show that the membrane successfully resists the ingress of moisture. See CodeMark CMNZ70151, BRANZ Appraisal 1169, BRANZ Appraisal 685, DUO Durability Study.

masterspec partner

Company Contact Details



Company: Equus Industries Limited
Physical Address: Sheffield Street, Riverlands, BLENHEIM
Postal Address: PO Box 601, BLENHEIM
Telephone: 64 03 5780214
Email: info@equus.nz
Website: www.equus.nz

EQUUS SOPREMA DUOTHERM Warm Roof & Deck Membrane



Product Technical Statement: 100193

- **Clause E3 Internal moisture:** Performance E3.3.1
DUOTHERM Warm Roofs provide the habitable buildings with adequate thermal resistance and R-values that are equal to or above those specified in E3/AS1. See BRANZ Appraisal 1169.
- **Clause F2 Hazardous building materials:** Performance F2.3.1
Well known experience with the type of materials used together with in-service history, show that DUOTHERM Warm Roofs complies with this performance requirement. Refer to SDS at www.equus.nz and BRANZ Appraisal 1169.
- **Clause H1 Energy efficiency :** Performance H1.3.1(a)
DUOTHERM Warm Roofs provide the building with adequate thermal resistance and R-values that are equal to or above those specified in H1/AS1 and H1/AS2. See BRANZ Appraisal 1169.

Supporting Evidence

The product has and can make available the following additional evidence to support the above statements:



CodeMark
[CMNZ70151](#)



BRANZ Appraisal
[1169, 685](#)

Product Criteria

Design requirements

For enhanced design flexibility, certified membranes are approved for roofs & decks with finished falls of minimum 1:80, and 1:100 for gutters, allowing for a finished fall of 1°.

Installation requirements

Must be installed by an approved Equus applicator. Installation of substrates must be completed by a trades person with understanding of roof construction,

Maintenance requirements

The membrane roof system must be checked annually for damage rubbish or debris. Any damage such as small punctures or tears must be repaired by a recommended Equus applicator.

Warrantees

Warranted up to 25 years, with a 20-year Soprorema insurance backed warranty.

Company Product Information

Environmental

Available in a Green Roof system.

Relationships



Member of New Zealand Green Building Council

Building Product Information Requirements

Manufacturer

Legal Trading Name:

Equus Industries Ltd

Business Email:

info@equus.nz

Company Website:

www.equus.nz

Contact Number/s:

+64 3-5780214
035780214

Importer

Legal Trading Name:

Equus Industries Limited

Business Email:

info@equus.nz

Company Website:

EQUUS SOPREMA DUOTHERM Warm Roof & Deck Membrane

Product Technical Statement: 100193



www.equus.nz

Contact Number/s:

+64 03 -5780214

Product Identifier

SDWR

Warnings

This product has no warnings associated with it.



Date last validated: **17 June 2024**



Date last updated: **17 June 2024**

Disclaimer: The Product Technical Statement (PTS) template is copyright to Construction Information Limited. However the content of this PTS is the responsibility of the product manufacturer/supplier. Refer to the miproducts Terms and Conditions