

-7.4kg/CO2/m2. Made in NZ from 99% recycled materials. Product Stewardship Program

[View miproducts listing](#)



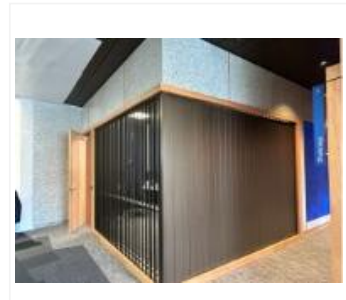
Level of assurance needed to demonstrate NZ Building Code Compliance

Supporting documentation should include self-assessment and technical information by manufacturer



saveBOARD confirms that this minimum level of assurance has been met or exceeded by the following:

CodeMark
[CMNZ70148](#)



masterspec partner

Company Contact Details



Company: Upcycled Building Materials Limited

Physical Address: 7b Manukaka Heights Hurdon New Plymouth

Postal Address: 7b Manukaka Heights Hurdon New Plymouth

Telephone: 64 021 08242712

Email: enquiries@saveboard.nz

Website: <https://www.saveboard.nz/>

Technical Statement

Product Description

DESCRIPTION:

Made from 99% shredded and compressed composite packaging and soft plastics. Carbon -7.4kg/CO2/m2 A1-3 including biogenic

Pre-finished

Impact resistant

Extra High Wind Zone

ZERO Water, Glues or Chemicals added.

VOC's and Formaldehydes are < 5% of the Green Building Standard (0.005mg/m2/hr)

Declare label: Our products have been determined to meet the requirements for all applicable Imperatives of the Living Building Challenge.

Eco Choice Aotearoa Certified

Custom specifications available - length, density, thickness

Scope of use

As an internal wall or ceiling lining

On timber framing

Fire Group 3

New Zealand Building Code (NZBC)

The product will, if employed in accordance with the supplier's installation and maintenance requirements, assist with meeting the following provisions of the building code:

- **Clause B1 Structure:** Performance B1.3.1, B1.3.2, B1.3.3, B1.3.3(b), B1.3.3(f), B1.3.3(h), B1.3.3(j), B1.3.4(a)
<http://https://www.building.govt.nz/assets/Uploads/building-code-compliance/certifications-programmes/product-certification-scheme/product-certificate-register/saveboard-internal-lining.pdf>
- **Clause B2 Durability:** Performance B2.3.1(a), B2.3.2(a)
<http://https://www.building.govt.nz/assets/Uploads/building-code-compliance/certifications-programmes/product-certification-scheme/product-certificate-register/saveboard-internal-lining.pdf>
- **Clause C3 Fire affecting areas beyond the fire source:** Performance C3.4(a)
<http://https://www.building.govt.nz/assets/Uploads/building-code-compliance/certifications-programmes/product-certification-scheme/product-certificate-register/saveboard-internal-lining.pdf>
- **Clause E2 External moisture:** Performance E2.3.2, E2.3.5
<http://https://www.building.govt.nz/assets/Uploads/building-code-compliance/certifications-programmes/product-certification-scheme/product-certificate-register/saveboard-internal-lining.pdf>
- **Clause E3 Internal moisture:** Performance E3.3.1, E3.3.4, E3.3.5
<http://https://www.building.govt.nz/assets/Uploads/building-code-compliance/certifications-programmes/product-certification-scheme/product-certificate-register/saveboard-internal-lining.pdf>

- **Clause F2 Hazardous building materials:** Performance F2.3.1
<http://https://www.building.govt.nz/assets/Uploads/building-code-compliance/certifications-programmes/product-certification-scheme/product-certificate-register/saveboard-internal-lining.pdf>
- **Clause H1 Energy efficiency :** Performance H1.3.1
<http://https://www.building.govt.nz/assets/Uploads/building-code-compliance/certifications-programmes/product-certification-scheme/product-certificate-register/saveboard-internal-lining.pdf>

Supporting Evidence

The product has and can make available the following additional evidence to support the above statements:



CodeMark
[CMNZ70148](#)

Product Criteria

Design requirements

Installation requirements

Please refer to the [Exposed Install Guide](#)

Maintenance requirements

Maintenance under normal conditions - saveBOARD Exposed requires no maintenance providing that the protective covering has been maintained. Not for use in wet areas

Warrantees

[Warranty](#) period: 15 years from proven date of purchase.

Company Product Information

Environmental

Made in NZ from 99% recycled materials. 21kgs of waste per board diverted from landfill.

Carbon -7.4kgCO2/m2 (A1-3 including biogenic)

[Product Steward Program](#)

No water, glues or additives used during manufacture

VOC's and Formaldehydes are < 5% of the Green Building Standard (0.005mg/m2/hr) [VOC Emission certificate](#)

[Declare label](#): Our products have been determined to meet the requirements for all applicable Imperatives of the Living Building Challenge.

[Eco Choice Aotearoa Certified](#)

Relationships



Environmental Choice New Zealand



New Zealand Made



Member of New Zealand Green Building Council



Date last validated: **03 October 2024**



Date last updated: **03 October 2024**

Disclaimer: The Product Technical Statement (PTS) template is copyright to Construction Information Limited. However the content of this PTS is the responsibility of the product manufacturer/supplier. Refer to the miproducts Terms and Conditions