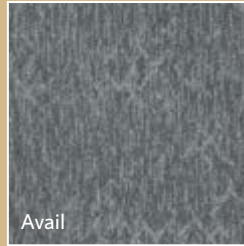
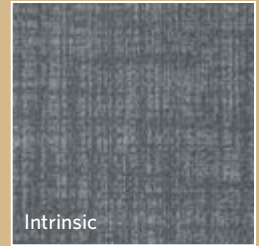


# MANAAKI

Avail | Intrinsic | Kindred | Myriad



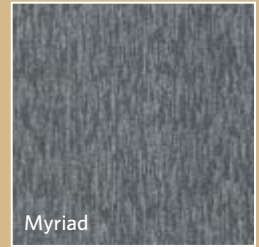
Avail



Intrinsic



Kindred



Myriad



Milliken<sup>™</sup>  
Ontera<sup>™</sup>





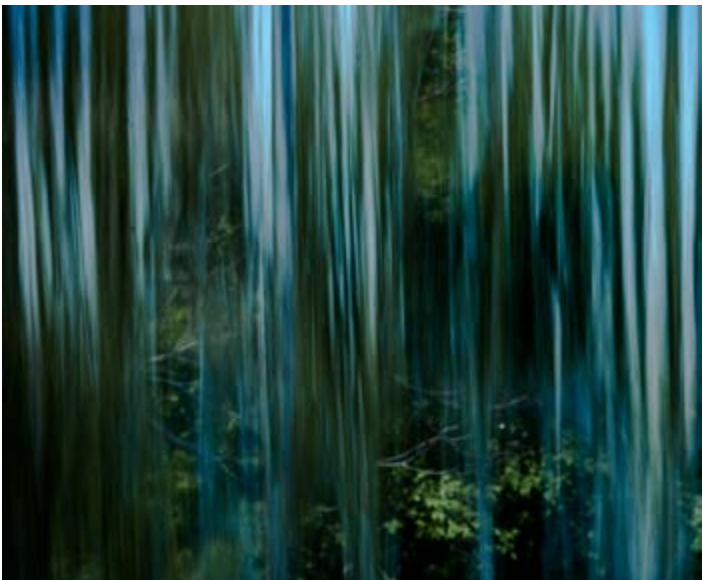
**INSPIRED. INSPIRING.**

"Manaaki" is a Maori word meaning to support, take care of, give hospitality to, protect, show respect and care for others.

The Manaaki collection is inspired by nature's nurturing instincts and the people who so generously give care and support for the infirm or aged members of our community. A warm, homely feel delivered by elegant organic tones and seamless textures. Subtle contrasts and sophisticated patterning provide a functional yet calming balance – designed to contribute comfort and support for a soothing environment.



Myriad in Shale, MYR153-5





# Kindred

A rich contrasting pattern - like a naturally weathered landscape bursting with an enthralling story to tell.



KIN153-5 SHALE



KIN121 PUMICE



KIN44 RHYOLITE



KIN47 SCORIA



KIN108-122 LIMESTONE



KIN13-108 SLATE



Kindred in Shale, KIN153-5



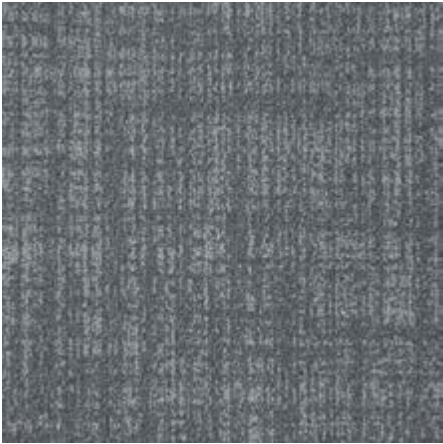


Kindred in Scoria, KIN47



# Intrinsic

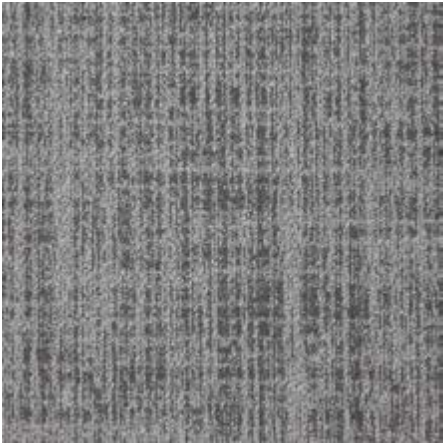
Subtle, soothing, structural and strong. The Intrinsic cross hatch design represents the supporting and nurturing powers of nature.



INT153-5 SHALE



INT121 PUMICE



INT44 RHYOLITE



INT47 SCORIA



INT108-122 LIMESTONE



INT13-108 SLATE



Intrinsic in Pumice, INT121



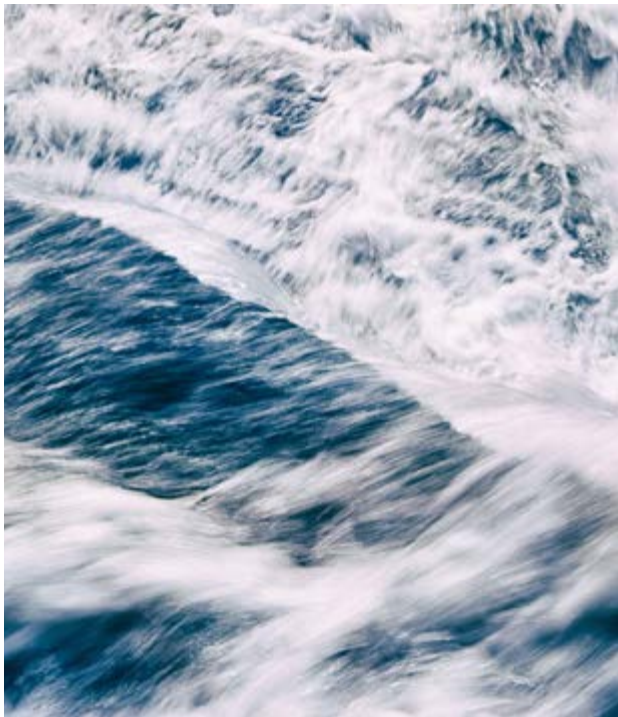


Intrinsic in Shale, INT153-5



# Myriad

A graceful linear design inspired by calming streams meandering through the countryside.



MYR153-5 SHALE



MYR121 PUMICE



MYR44 RHYOLITE



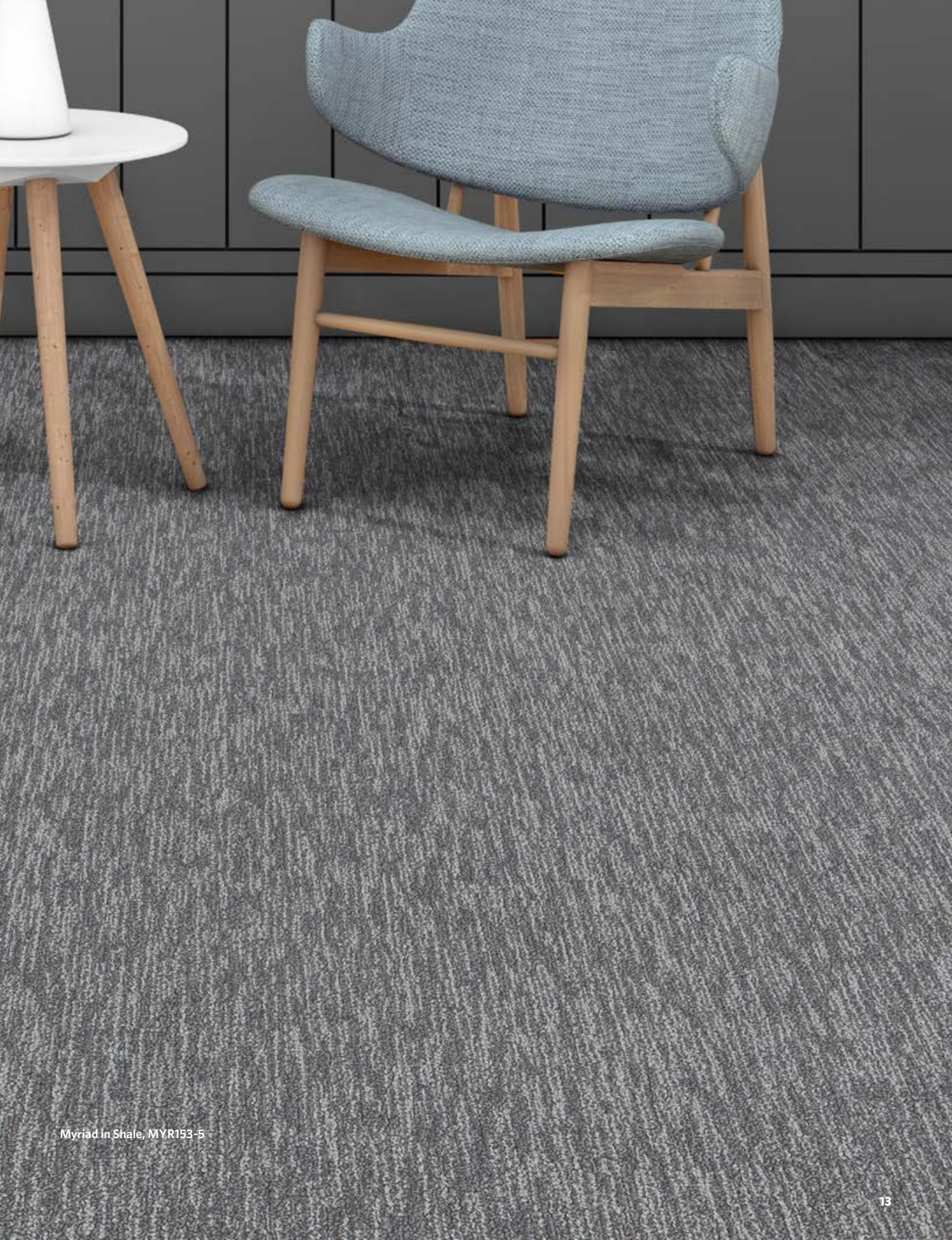
MYR47 SCORIA



MYR108-122 LIMESTONE



MYR13-108 SLATE



Myriad in Shale, MYR153-5





Myriad in Rhyolite, MYR44



# Avail

Soft organic patterns expressing instinctive comfort. A new perspective with an elegant visual landscape for the floor.



AVA153-5 SHALE



AVA121 PUMICE



AVA44 RHYOLITE



AVA47 SCORIA



AVA108-122 LIMESTONE



AVA13-108 SLATE



Avail in Limestone, AVA108-122





Avail in Scoria, AVA47



# Maxima Backing

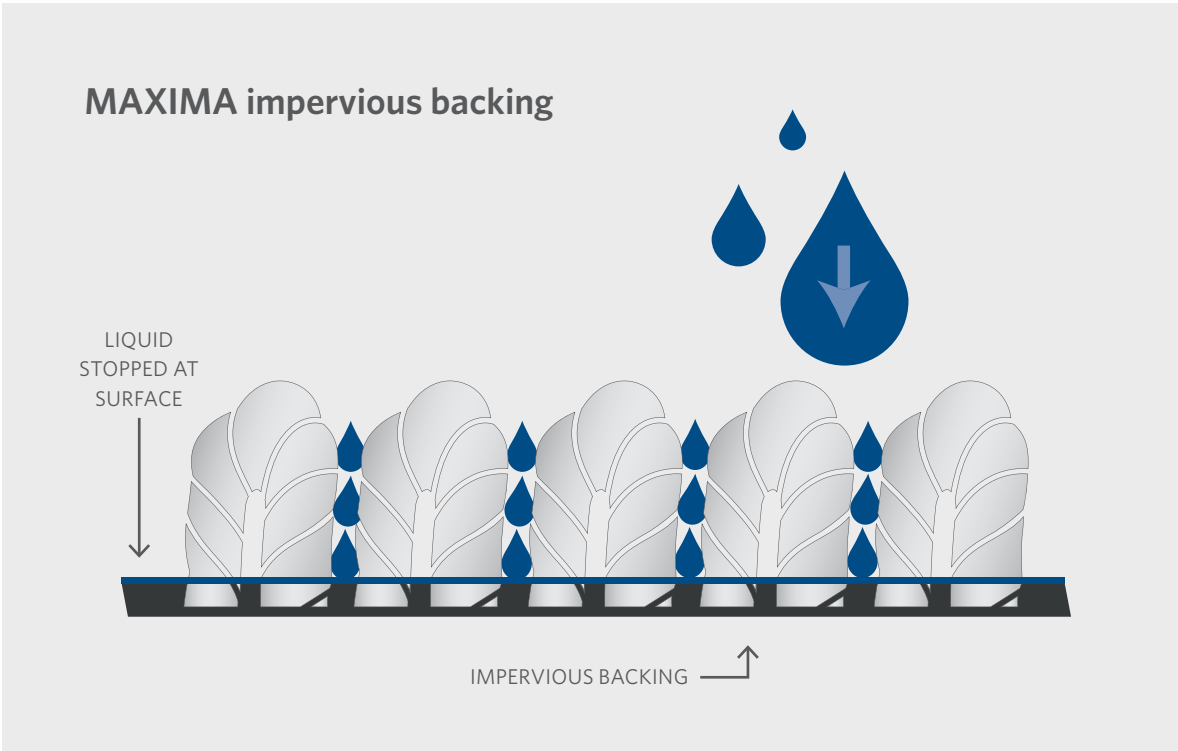
Manaaki carpet is manufactured with the revolutionary MAXIMA Backing System. Designed and developed by Milliken specifically for carpet in roll format, MAXIMA is a world leading polyolefin backing system delivering maximum performance for all project installations.

- Maximum impermeability
- Maximum environmental responsibility
- Maximum health and wellness



Plus the light weight and flexible properties of the MAXIMA Backing System make life easier for installers when manoeuvring and laying the rolls on site.

The MAXIMA impervious backing ensures Manaaki carpet rolls are perfectly suitable to handle the demands of health and aged care environments.



# Technically Superior Performance

Manaaki carpet achieves technically superior performance via:

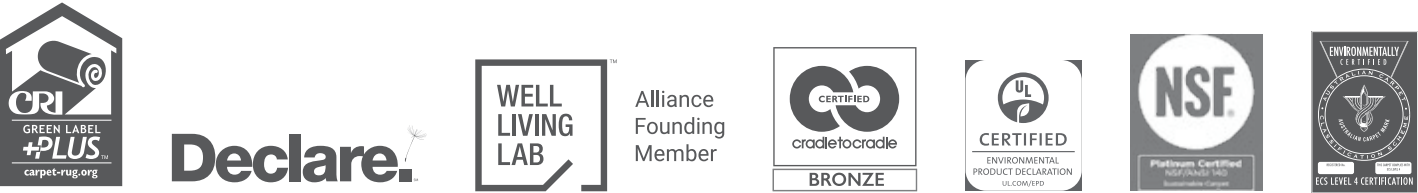
- Aquafil® Econyl yarn with 100% recycled content
- 100% recyclable
- 18% recycled content
- Impervious polyolefin backing, PVC-free
- Push pull force test - independently certified and passed for use with wheeled equipment
- Flammability rating - exceeds industry standards
- VOC rating - exceeds industry standards
- Thermal Resistance (R Value) - exceeds industry standards.



For complete technical specifications refer to [www.millikenontera.com.au](http://www.millikenontera.com.au)

# Environmental Leadership

Milliken-Ontera has an unwavering commitment to environmental leadership across all aspects of our business. As a member of the Milliken family of companies, our environmental stewardship is world class but also continually evolving as we pioneer new techniques in manufacturing, wellness and sustainability. Our products exceed stringent environmental, health and quality standards which consequently enable compliance with world leading environmental certifications.









COLOURWAY

Avail



AVA153-5 SHALE



AVA121 PUMICE



AVA44 RHYOLITE



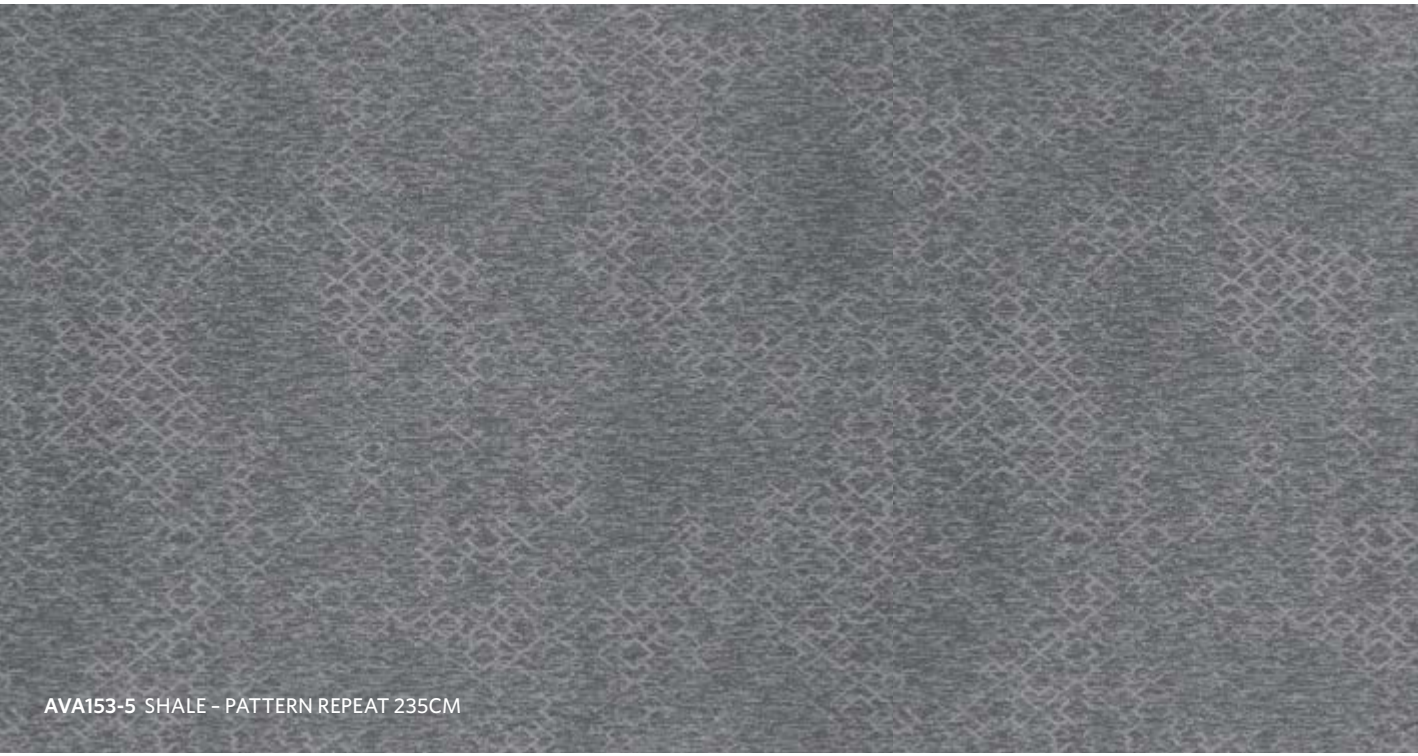
AVA47 SCORIA



AVA108-122 LIMESTONE



AVA13-108 SLATE



AVA153-5 SHALE - PATTERN REPEAT 235CM

COLOURWAY

Intrinsic

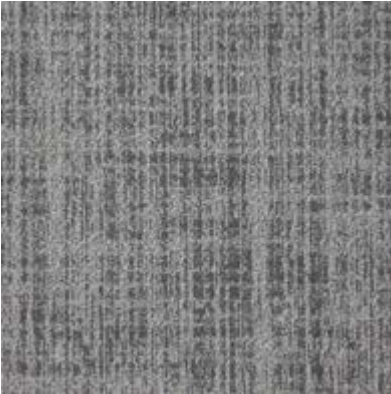


INT153-5 SHALE

● STOCKED ITEM



INT121 PUMICE



INT44 RHYOLITE



INT47 SCORIA



INT108-122 LIMESTONE



INT13-108 SLATE



INT153-5 SHALE - PATTERN REPEAT 181CM

COLOURWAY

Kindred



KIN153-5 SHALE



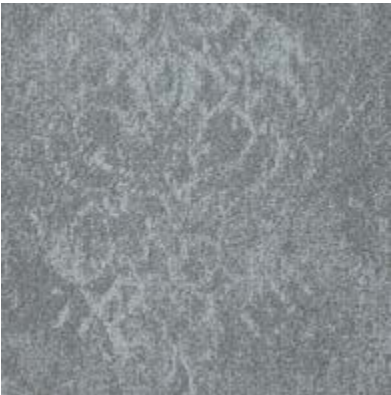
KIN121 PUMICE



KIN44 RHYOLITE



KIN47 SCORIA



KIN108-122 LIMESTONE



KIN13-108 SLATE



KIN153-5 SHALE - PATTERN REPEAT 226CM

COLOURWAY

Myriad



MYR153-5 SHALE



MYR121 PUMICE



MYR44 RHYOLITE



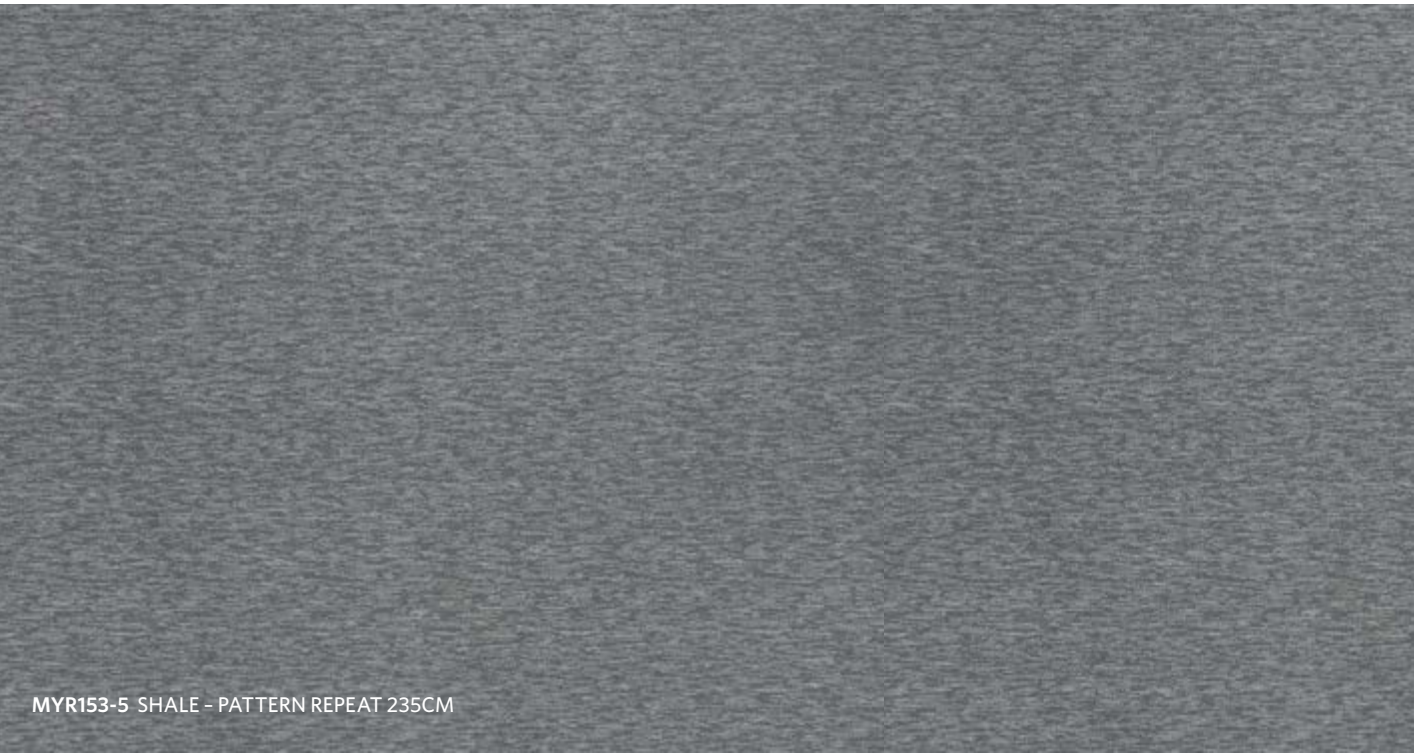
MYR47 SCORIA



MYR108-122 LIMESTONE



MYR13-108 SLATE



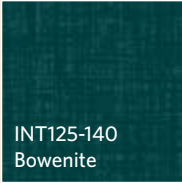
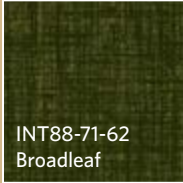



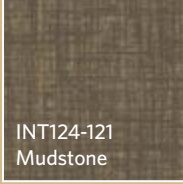

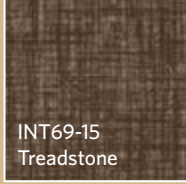
MYR153-5 SHALE - PATTERN REPEAT 235CM



# MANAAKI

## Accent Colours

Avail | Intrinsic | Kindred | Myriad

 INT125-140 Bowenite	 INT88-71-62 Broadleaf	 INT73-131 Catchment	 INT126-161 Geothermal
 INT59 -44 Gorge	 INT124-121 Mudstone	 INT82-179 Redpine	 INT69-15 Treadstone



Milliken™  
Ontera™

Intrinsic in Broadleaf, INT88-71-62









Avail in Treadstone, AVA69-15





Avail in Bowenite, AVA125-140



Myriad in Mudstone and Redpine, MYR124-121 and MYR82-179

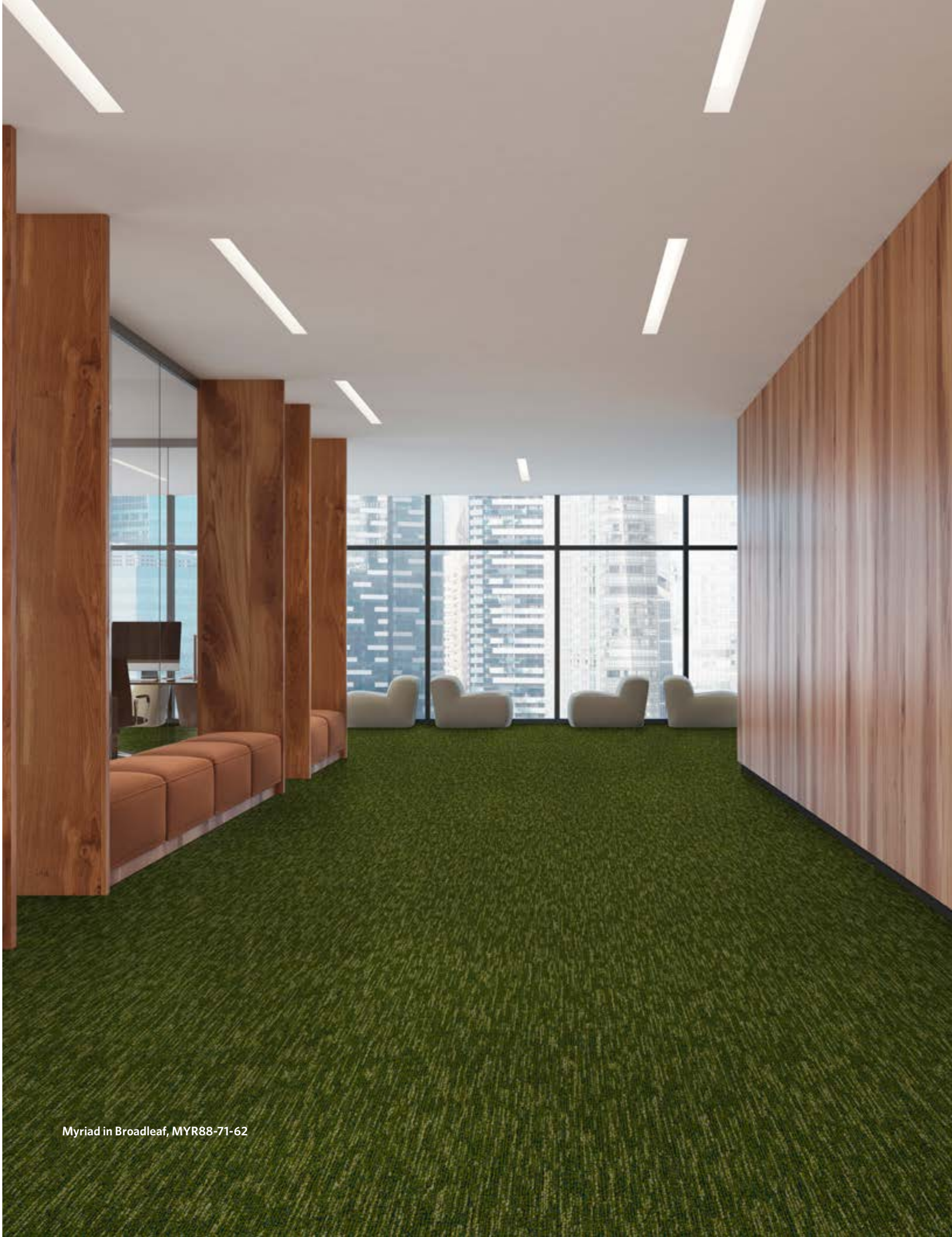




Avail in Gorge, AVA59-44



Kindred in Geothermal, KIN126-161



Myriad in Broadleaf, MYR88-71-62







COLOURWAY

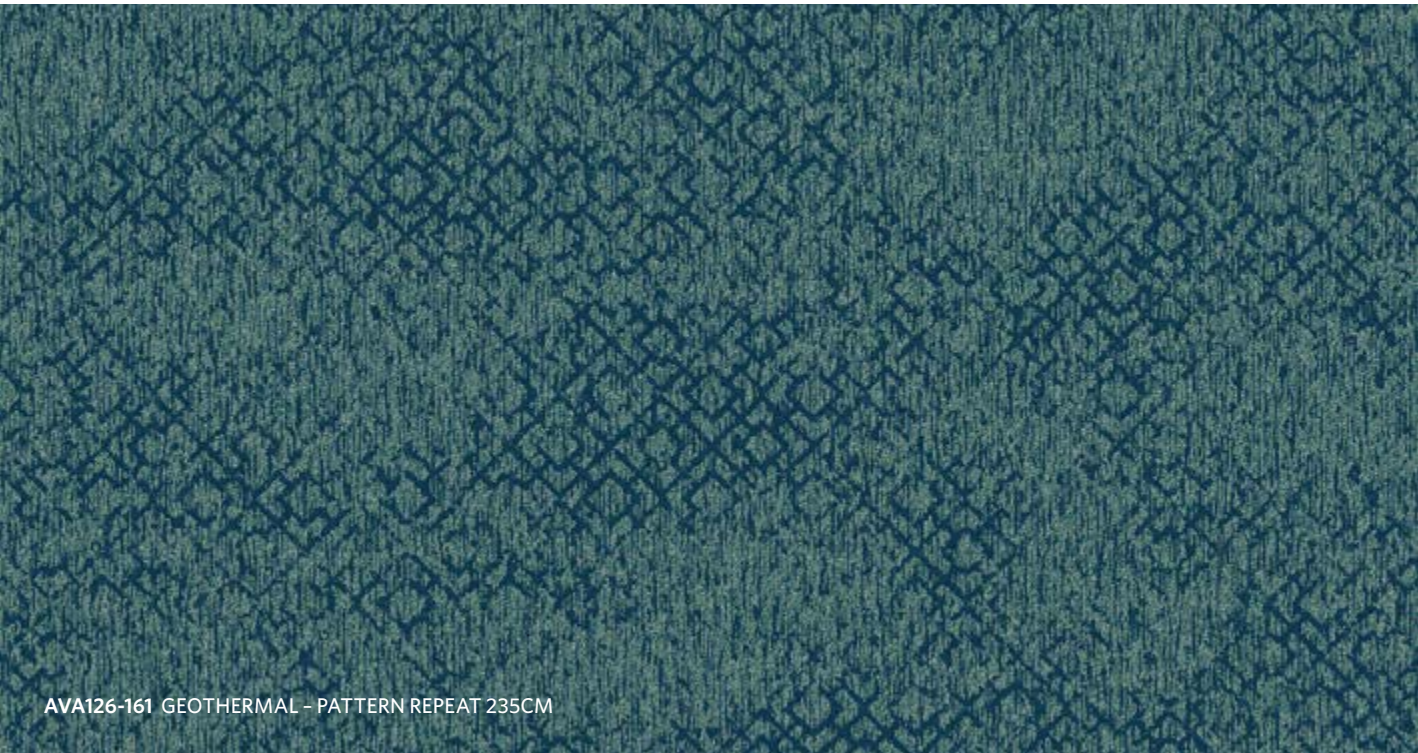
Avail



AVA126-161 GEOTHERMAL    AVA125-140 BOWENITE    AVA73-131 CATCHMENT    AVA88-71-62 BROADLEAF



AVA59-44 GORGE    AVA69-15 TREADSTONE    AVA124-121 MUDSTONE    AVA82-179 REDPINE

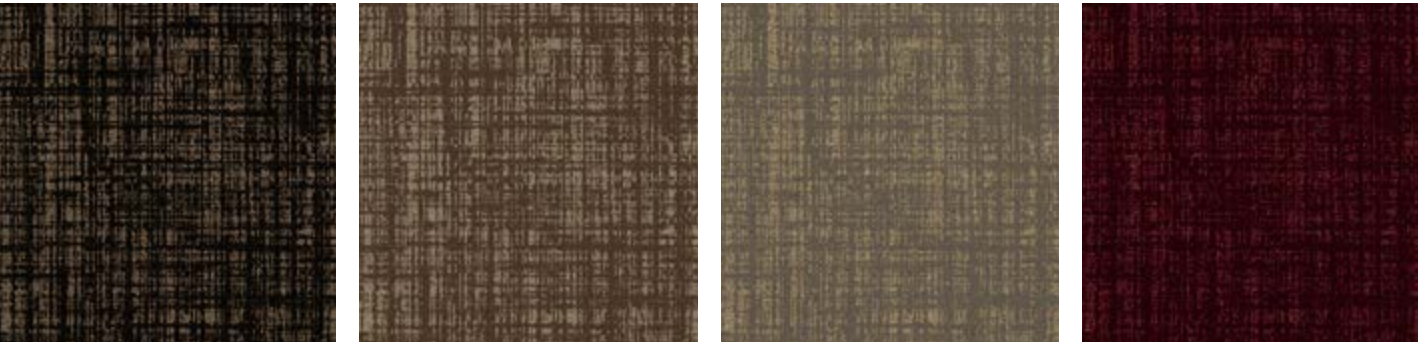


COLOURWAY

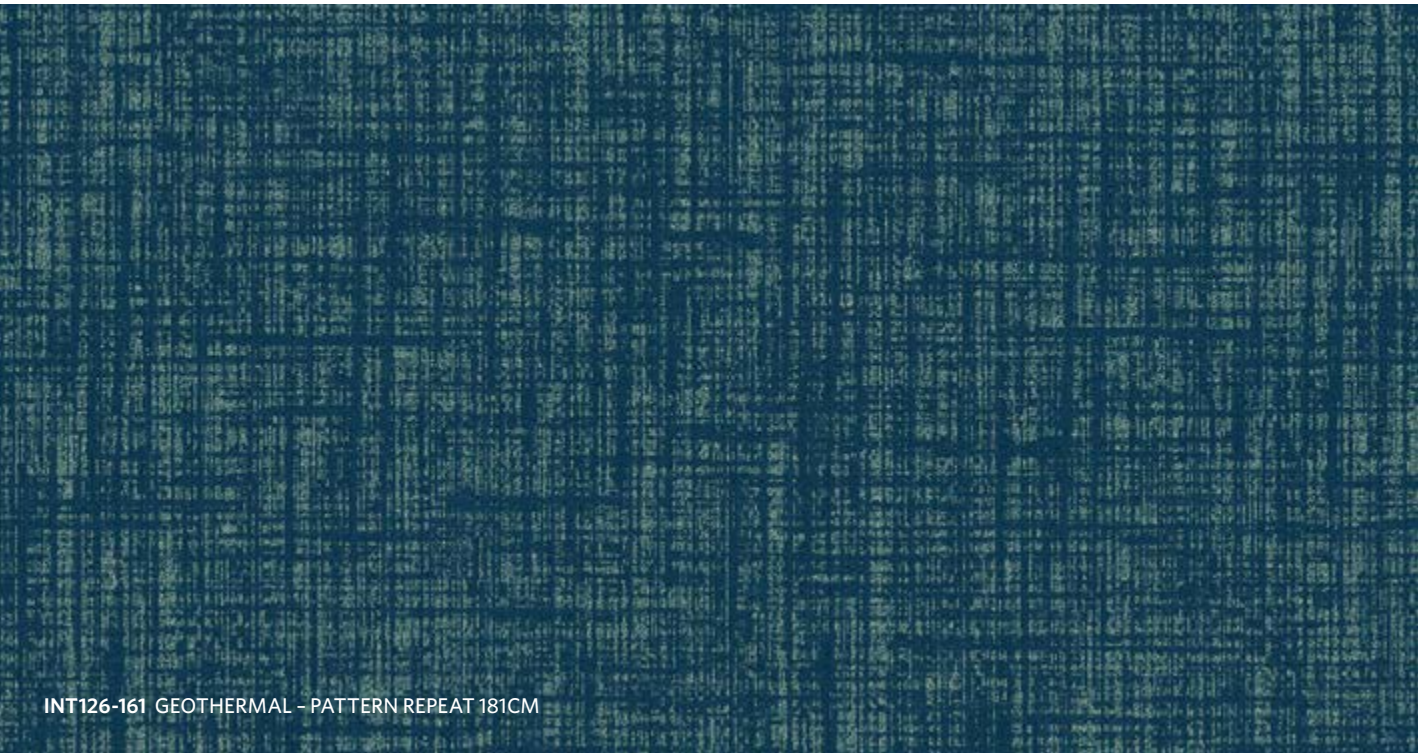
Intrinsic



INT126-161 GEOTHERMAL    INT125-140 BOWENITE    INT73-131 CATCHMENT    INT88-71-62 BROADLEAF

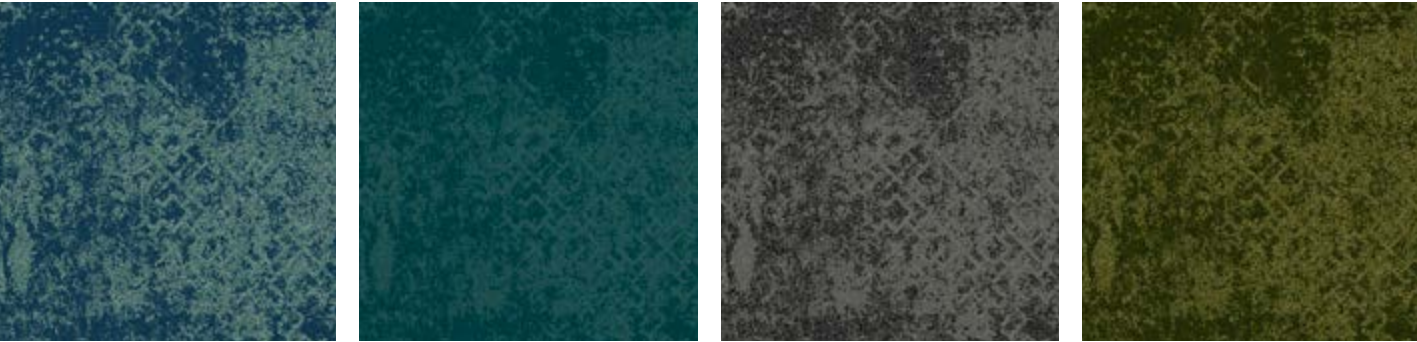


INT59-44 GORGE    INT69-15 TREADSTONE    INT124-121 MUDSTONE    INT82-179 REDPINE

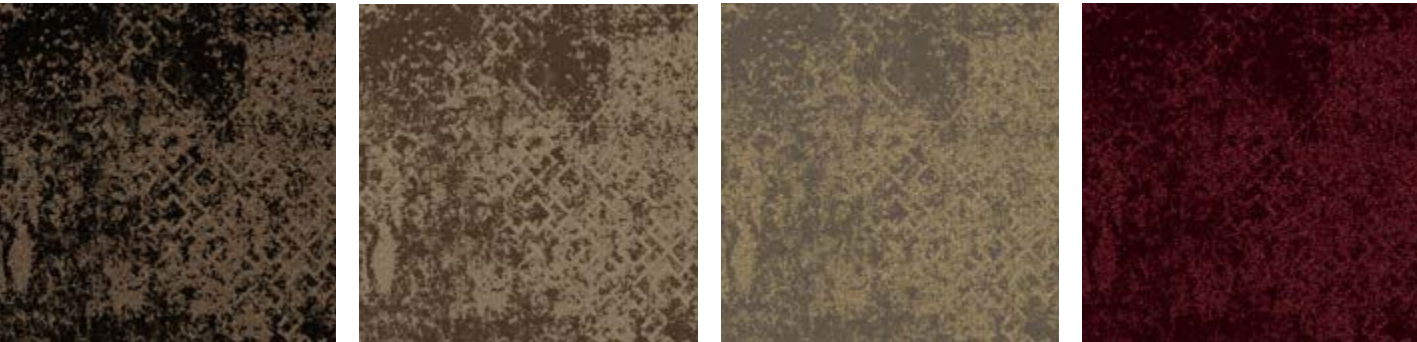


COLOURWAY

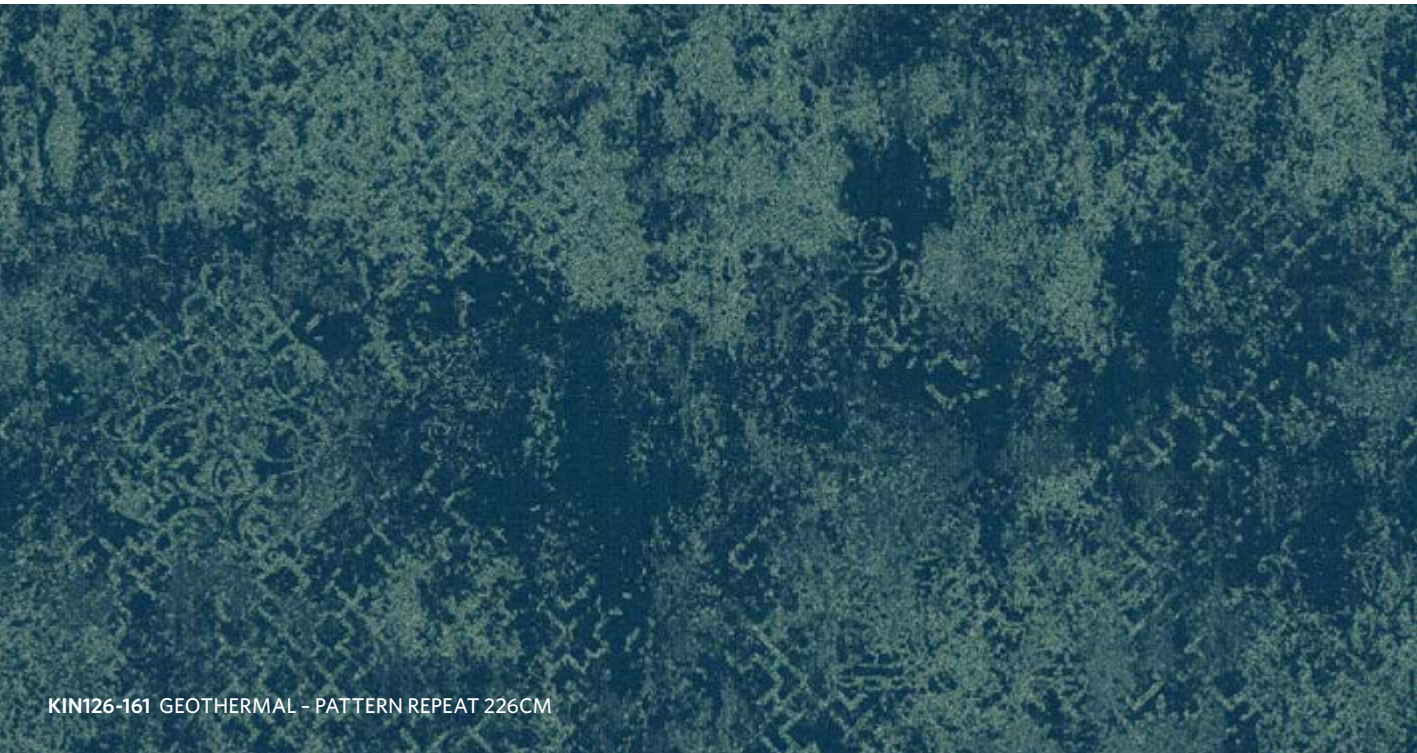
Kindred



KIN126-161 GEOTHERMAL    KIN125-140 BOWENITE    KIN73-131 CATCHMENT    KIN88-71-62 BROADLEAF

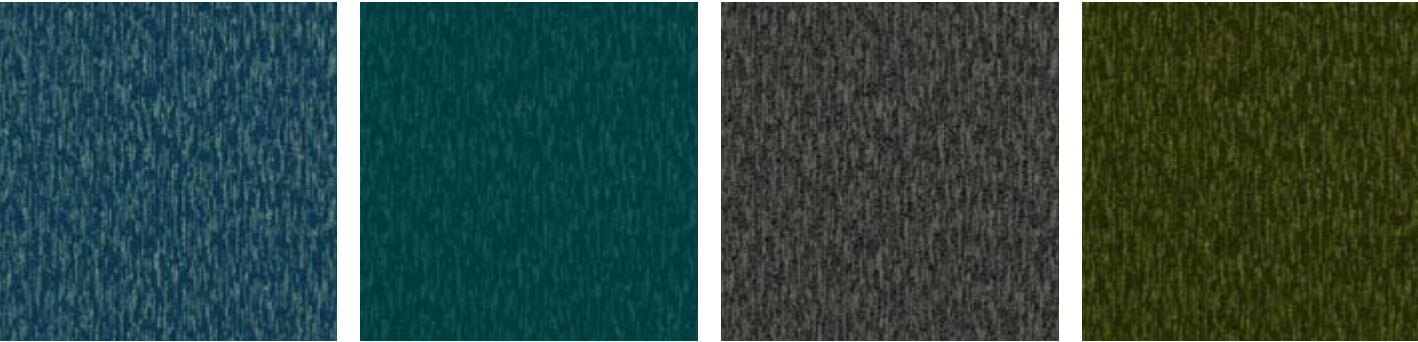


KIN59-44 GORGE    KIN69-15 TREADSTONE    KIN124-121 MUDSTONE    KIN82-179 REDPINE



COLOURWAY

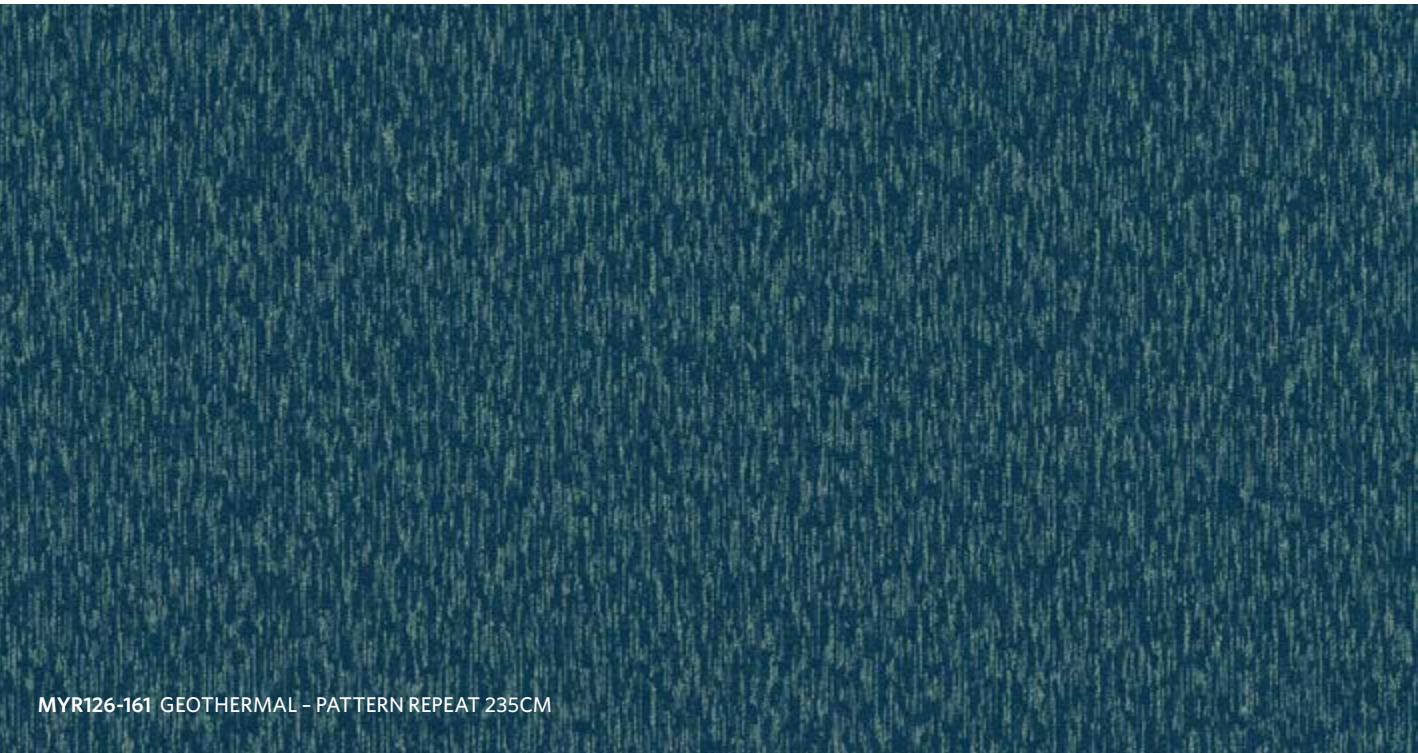
Myriad



MYR126-161 GEOTHERMAL    MYR125-140 BOWENITE    MYR73-131 CATCHMENT    MYR88-71-62 BROADLEAF



MYR59-44 GORGE    MYR69-15 TREADSTONE    MYR124-121 MUDSTONE    MYR82-179 REDPINE





# MANAAKI

## SPECIFICATION

### Construction

Tufted, Textured Loop

### Sheet Size

2m x 12m

### Dye Method

Solution Dyed

### Pattern Repeat

Myriad: 235cm

Avail: 235cm

Intrinsic: 181cm

Kindred: 226cm

### Yarn Type

Aquafil® Econyl

Solution-Dyed Nylon Type 6

### Tufted Face Weight

18 oz/yd<sup>2</sup>

### Gauge

1/12

### Standard Backing

Maxima™ Hard Back (PVC-Free)

### Nominal Total Thickness

6.8 mm

### Nominal Total Weight

3323 g/m<sup>2</sup>

### Texture Appearance

Retention Rating

Heavy

### Indoor Air Quality

≤0.5mg | m<sup>3</sup> (GLP3200)

### VOC

Pass (ISO10580:2010)

### Flammability

Radiant Panel Test:

CRF = 7.3kWm<sup>2</sup>; Smoke = 85%. Mins

### Recycled Content

18% Pre-Consumer

### ACCS Grading

Commercial Heavy duty (CHD3\* 16175)

### ECS Grading

Level 4 (Certificate No. 16175)

### Environmental

Declare 3<sup>rd</sup> Party Verified RED LIST FREE

### Acoustic rating

NRC ≥ 0.25 (Exceeds standard acoustic requirements the Carpet Institute)

Ln,w ≤45dB (Well below the BCA limit of 62dB)

### Recommended Maintenance

Refer to Milliken-Ontera Care & Maintenance guide Millicare® Care plan available in some regions.

### Warranties

15-Year Wear Warranty

15-Year Dimensional Stability Warranty

15-Year Anti-Static Warranty

15-Castro Chair Wear Warranty

### Installation Method

Refer to sheet installation video -

[www.millikenontera.com.au](http://www.millikenontera.com.au)



BROADLOOM



Alliance  
Founding  
Member



Declare.



### Australia

Toll Free: 1800 668 372

### New Zealand

Toll Free: 0800 668372



Growing greener for over 100 years.  
Visit [milliken.com](http://milliken.com) for more information.