



COLOUR CONNECT

Milliken™

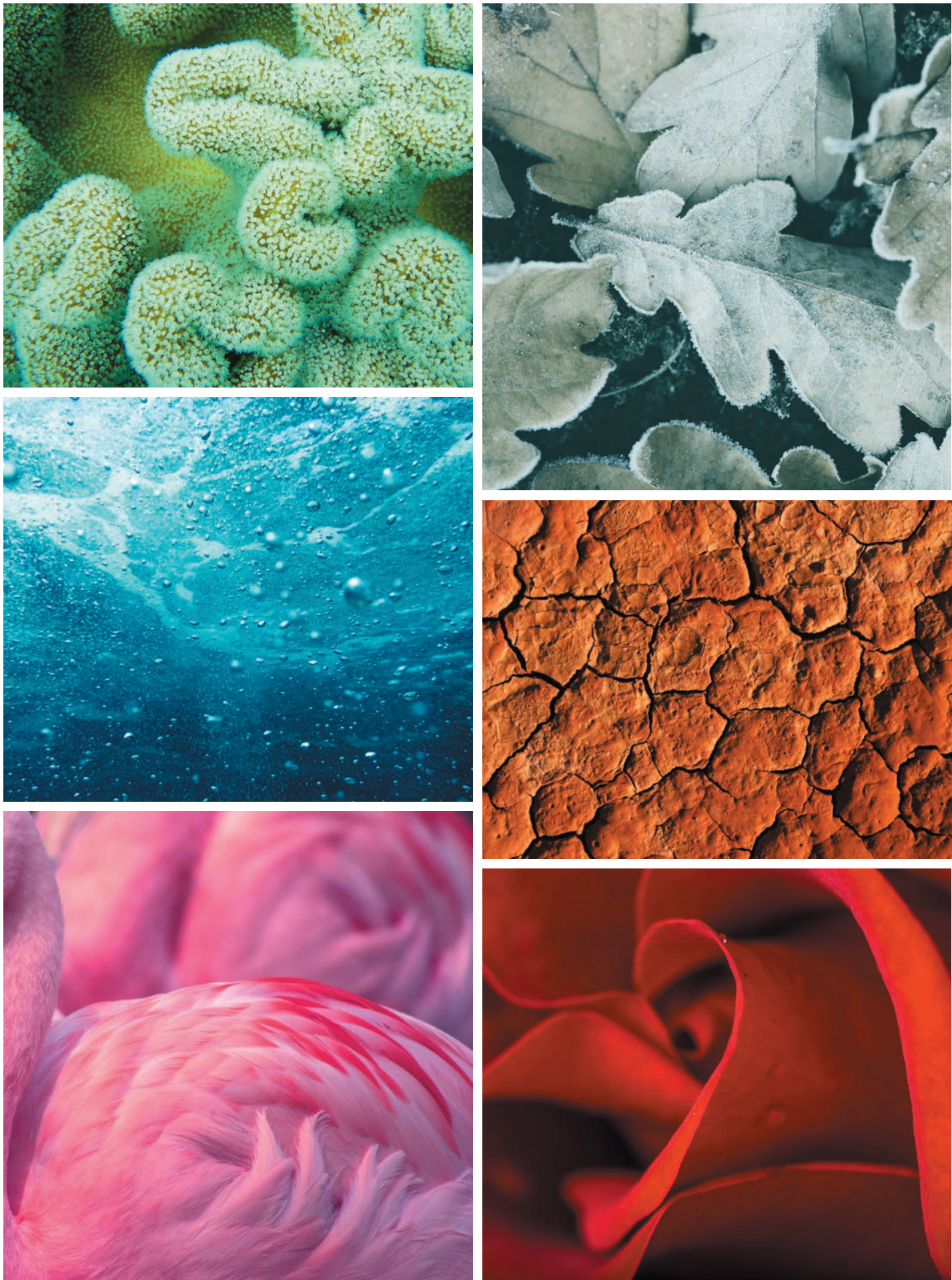
COLOUR CONNECT

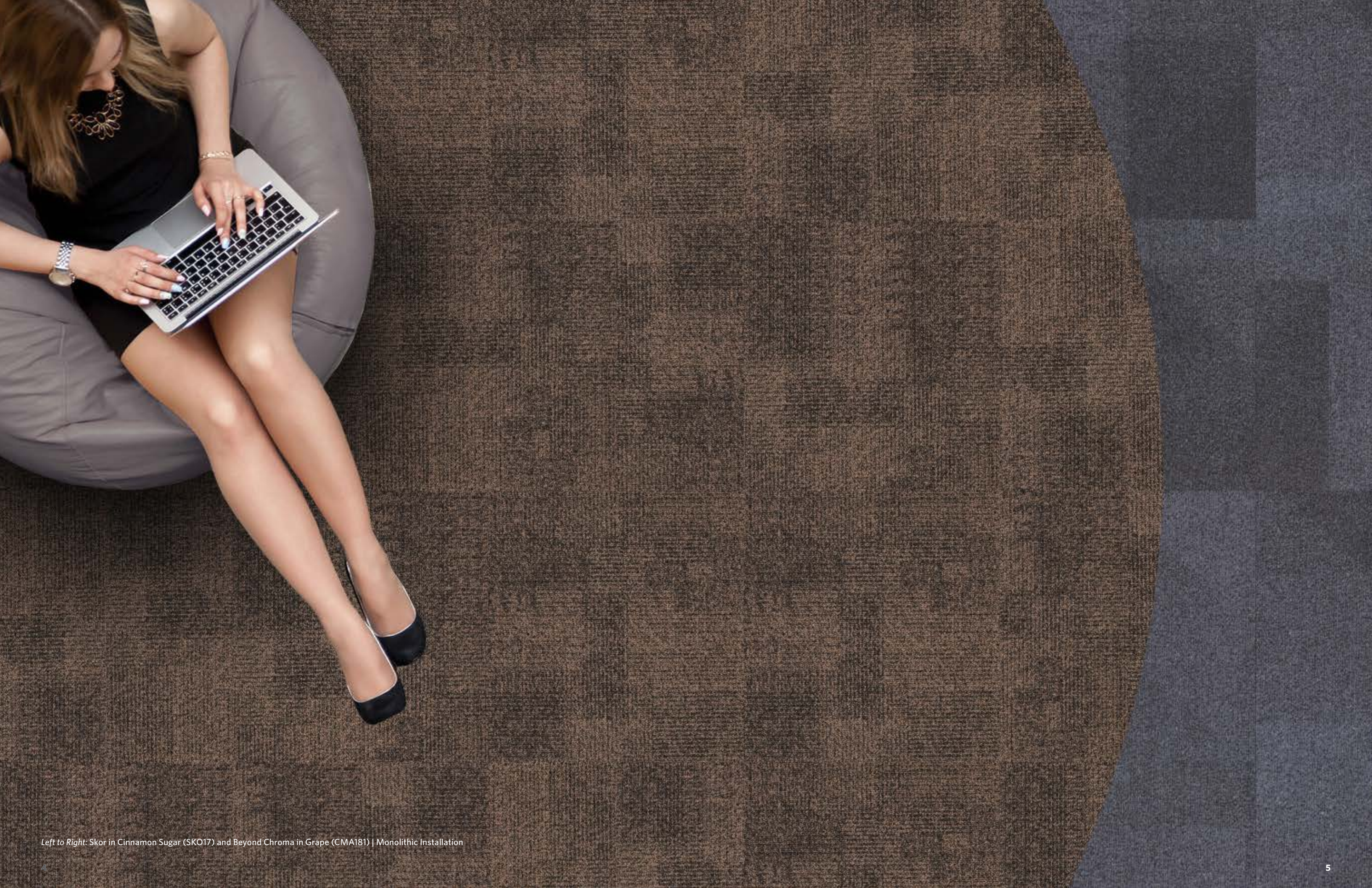


Queensland University of Technology, Queensland | RAL Architects | Photographer: Christopher Frederick Jones
Colour Connect in Skor, Tropics Blue (SKO140-126) and Momentum in Mythology, Novel (MYT159) | Monolithic Installation

The power of colour and its impact upon our senses has been understood for centuries. Forging a link between the physical and the emotional, colours affect us in an intensely personal way.

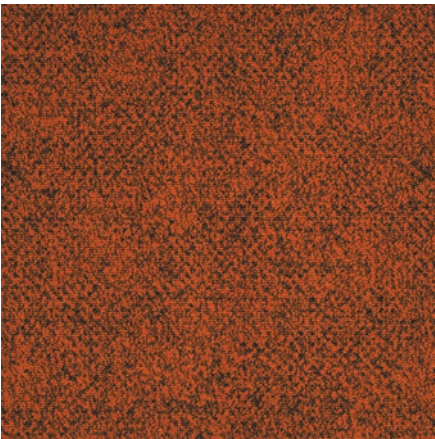
Create a profound spatial experience with colour at its core with Colour Connect, a dynamic, panoramic collection that will transform your learning and lifestyle spaces. The Colour Connect collection offers two designs – Skor and Linx – to accentuate your choice of hue with texture and tone.



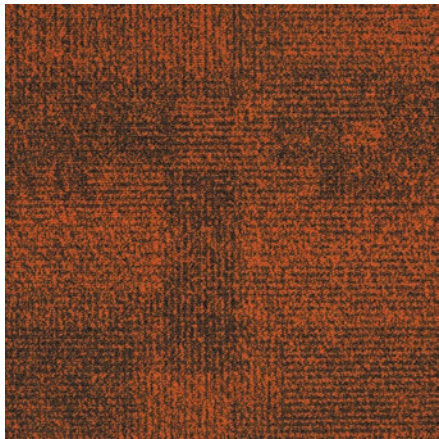


Left to Right: Skor in Cinnamon Sugar (SKO17) and Beyond Chroma in Grape (CMA181) | Monolithic Installation

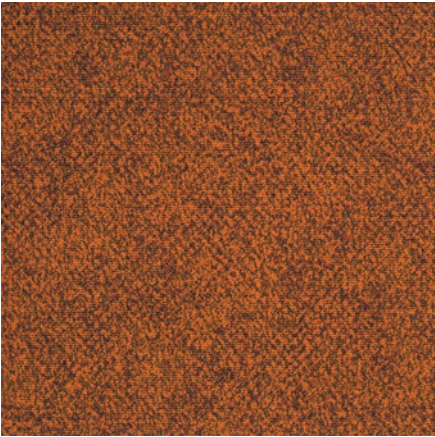
COLOUR PALETTE | REDS



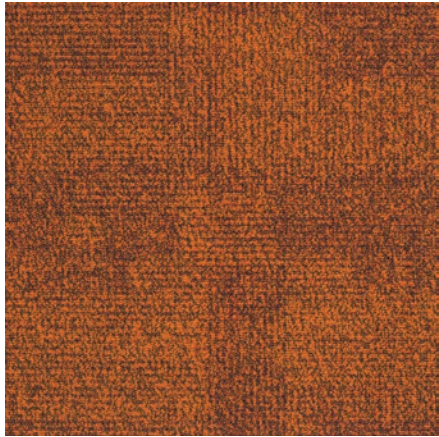
LNX33 MANDARIN SKIN



SKO33 MANDARIN SKIN



LNX128 SUNSET SCAPE



SKO128 SUNSET SCAPE

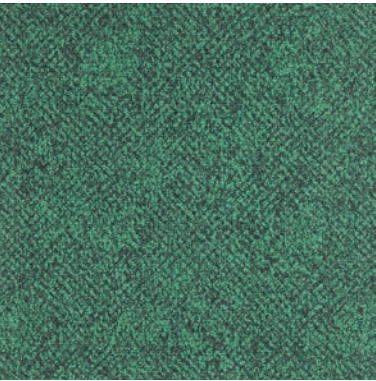


Embolden your designed space with primal energy and palpable excitement with tones of red, the colour which stimulates our most powerful physical responses.

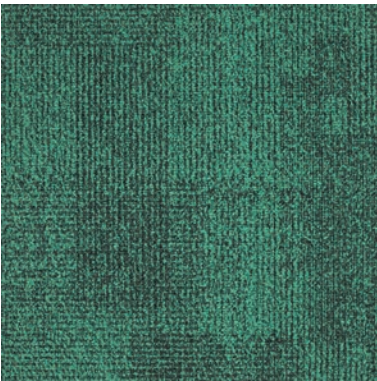


Left to Right: Skor in Sunset Scape | SKO128 | Monolithic Installation and Metro Park Wood (LVT) | Hickory in Parchment | HCR22-20 | 18.14cm x 121.92cm | Ashlar (Vertical) Installation

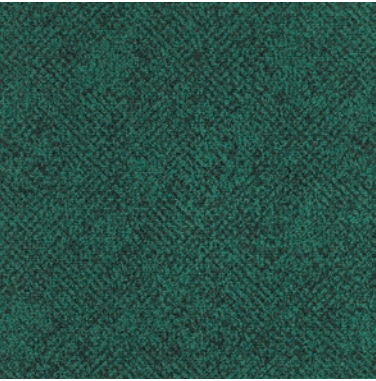
COLOUR PALETTE | GREENS & BLUES



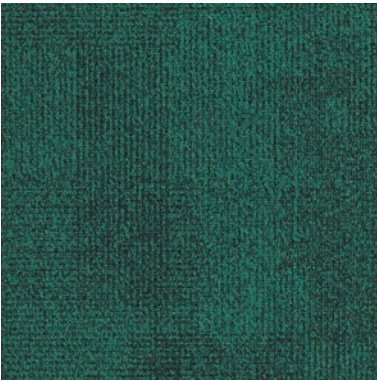
LNx62 EMERALD GEM



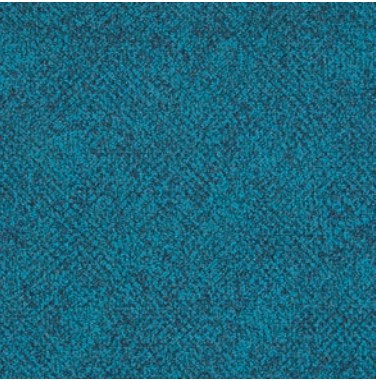
SKO62 EMERALD GEM



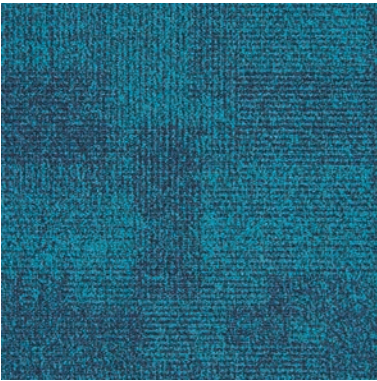
LNx103 JADE LAKE



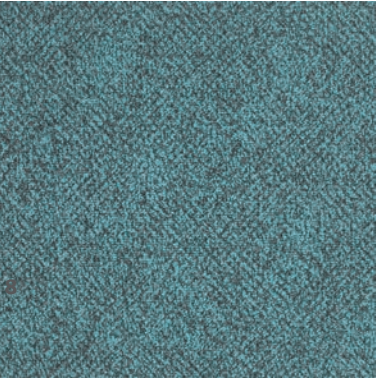
SKO103 JADE LAKE



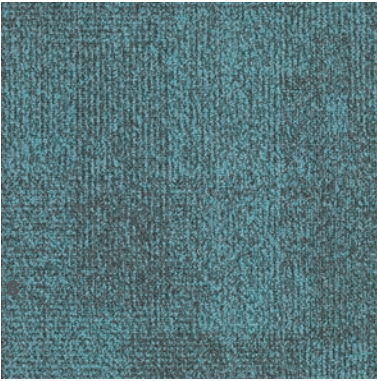
LNx140-126 TROPICS BLUE



SKO140-126 TROPICS BLUE



LNx140-159 SEA WASH



SKO140-159 SEA WASH

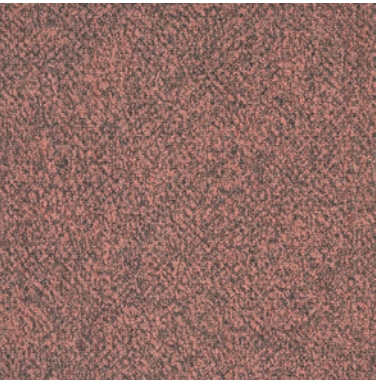


Establish calmness and productivity with our range of blues and greens. Inspiring heightened imagination, these shades create tranquil yet thought-provoking zones.

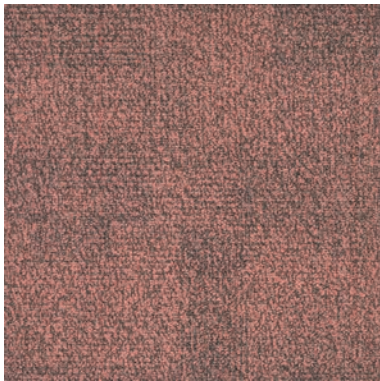


Te Awe Library, Wellington, New Zealand | Herriot Melhuish O'Neill Architects | Photographer: Andy Spain
Colour Connect in Linx, Indigo Dye (LNx73), Sea Wash (LNx140-159, Bower Blue (LNx159), Tin Lid (LNx152) and Charred Rock (LNx5) | Monolithic Installation

COLOUR PALETTE | PINKS & PURPLES



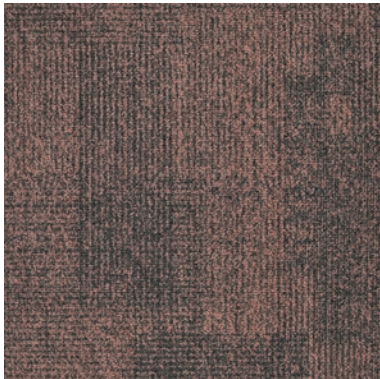
LNK146 MELON



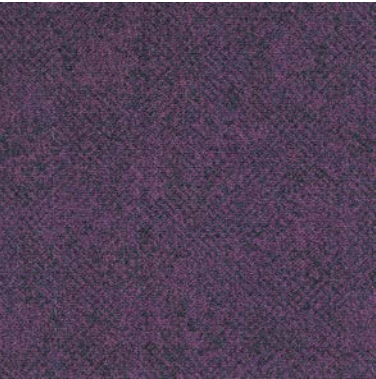
SKO146 MELON



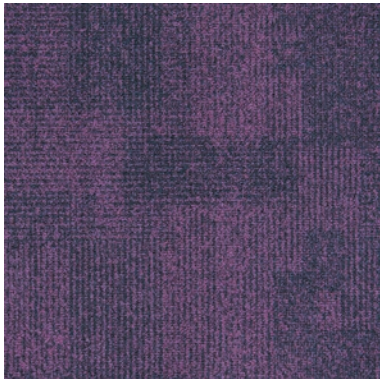
LNK104 PINK ALMOND



SKO104 PINK ALMOND



LNK137-181 VIOLET SILK



SKO137-181 VIOLET SILK



LNK164 RHUBARB STEM



SKO164 RHUBARB STEM

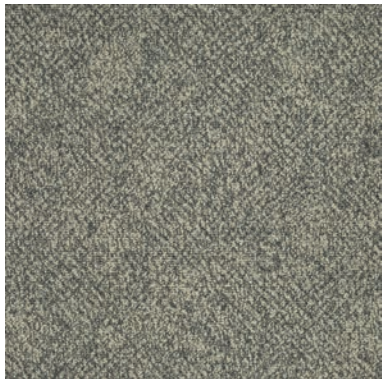


Luxurious, regal, elegant – our pinks and purples bring a touch of authenticity to any space, inspiring wisdom and intrigue while underlining the inherent quality of the details in your designed space.



Left to Right: Skor in Pink Almond (SKO104) and Linx in Melon (SKO146) | Monolithic Installation

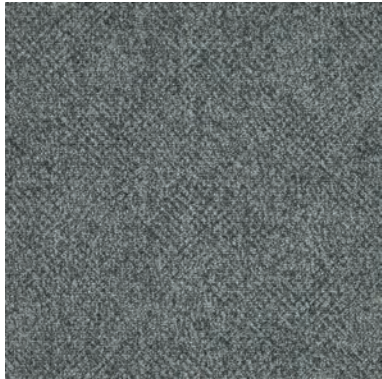
COLOUR PALETTE | BROWNS & GREYS



LNx21 LINEN WEAVE



SKO21 LINEN WEAVE



LNx152 TIN LID



SKO152 TIN LID



LNx97 WARM SMOKE



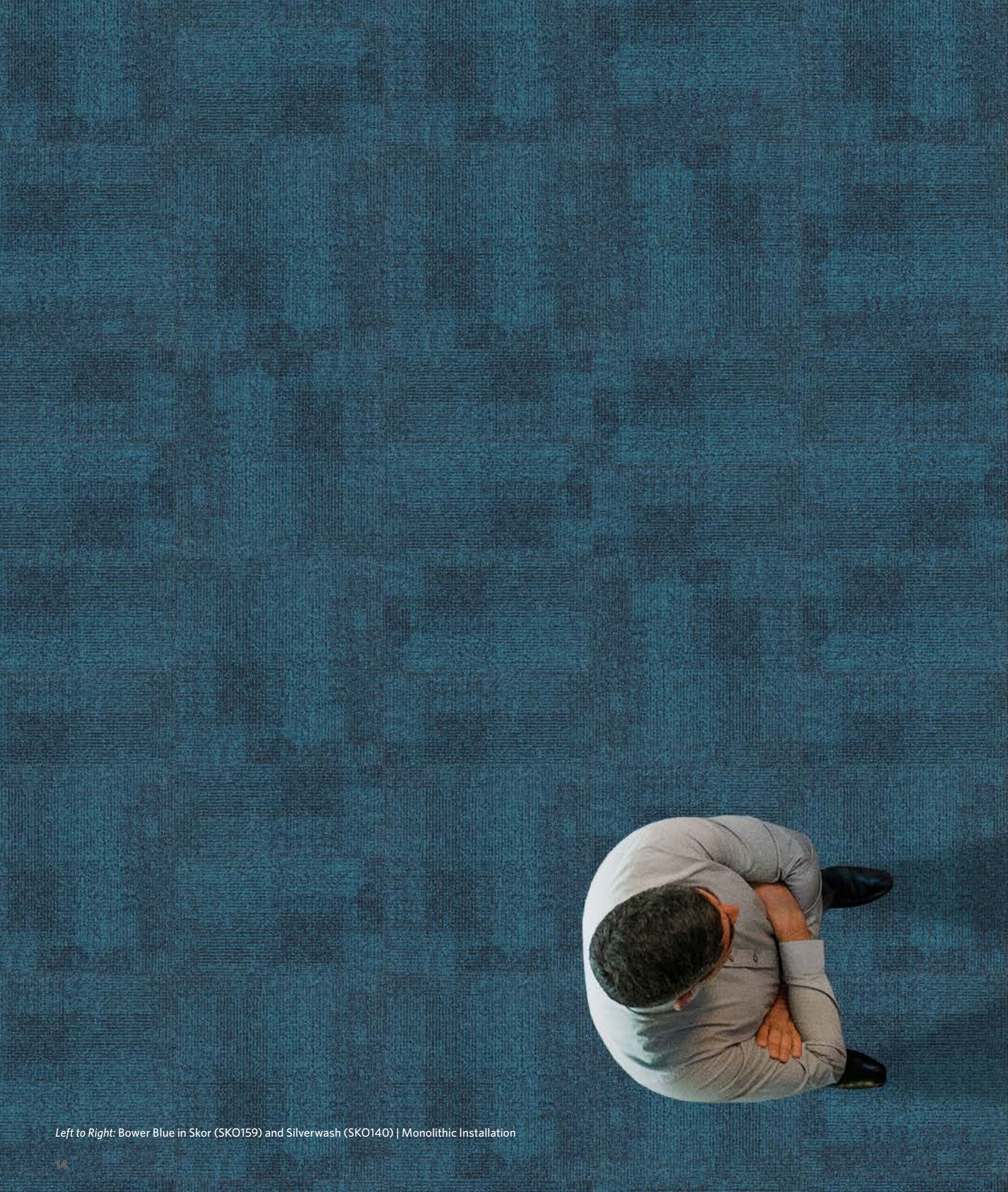
SKO97 WARM SMOKE



Bring any interior back to earth with our selection of browns and greys. Versatile and adaptable, they provide an element of neutrality, while evoking restorative memories of nature.



Top to Bottom: Linen Weave in Linx | LNx21 | Monolithic Installation
Ash Cloud in Skor | SKO118 | Monolithic Installation

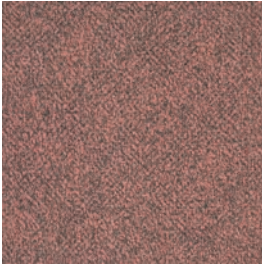


Left to Right: Bower Blue in Skor (SKO159) and Silverwash (SKO140) | Monolithic Installation



COLOURWAY

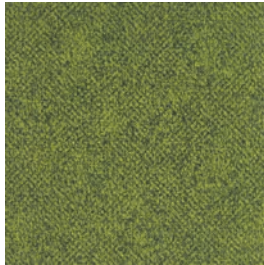
Linx



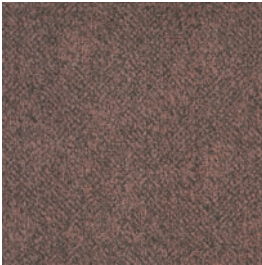
LNX146 MELON



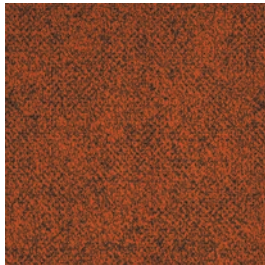
LNX128 SUNSET SCAPE



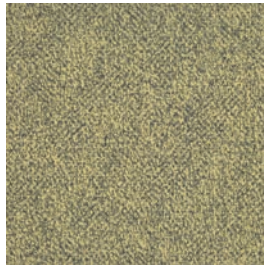
LNX141-103 KIWI PULP



LNX104 PINK ALMOND



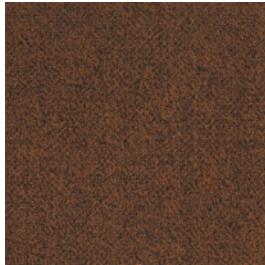
LNX33 MANDARIN SKIN



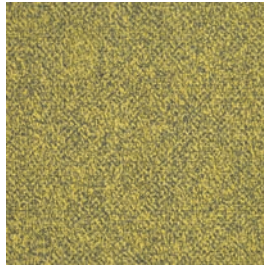
LNX75 BUTTER LEMON



LNX17 CINNAMON SUGAR



LNX57 CIGAR STEM



LNX105 PALE YOLK



LNX149 LAVENDER SPREAD



LNX137-181 VIOLET SILK



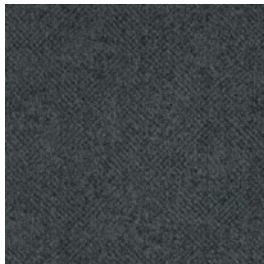
LNX164 RHUBARB STEM



LNX181 PALE PLUM



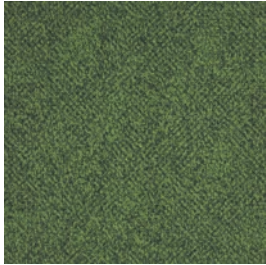
LNX97 WARM SMOKE



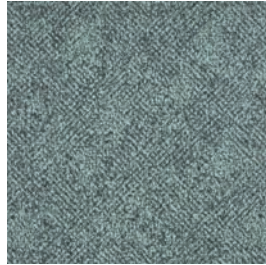
LNX118 ASH CLOUD



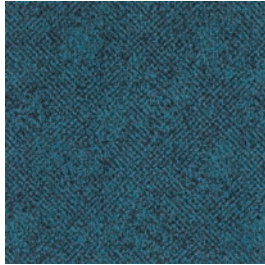
Left to Right: Linx in Mandarin Skin (LNX33),
Sunset Scape (LNX128) and
Kiwi Pulp (LNX141-103) | Monolithic Installation



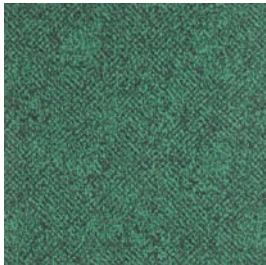
LNX141 PINE GREEN



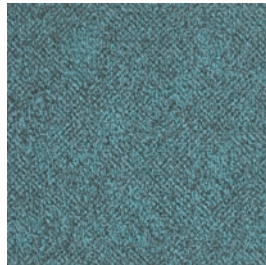
LNX172 PACIFIC TIDE



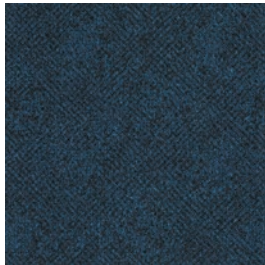
LNX159 BOWER BLUE



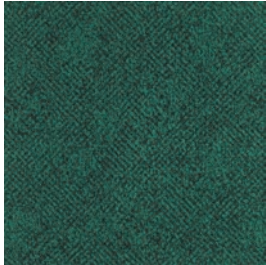
LNX62 EMERALD GEM



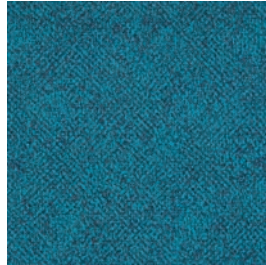
LNX140-159 SEA WASH



LNX126 SCUBA BLUE



LNX103 JADE LAKE



LNX140-126 TROPICS BLUE



LNX73 INDIGO DYE



LNX21 LINEN WEAVE



LNX171 SILVER WASH



LNX152 TIN LID



LNX41 DESERT BROWN



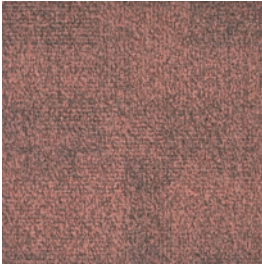
LNX83 WORN ROPE



LNX5 CHARRED ROCK

COLOURWAY

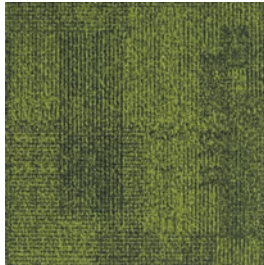
Skor



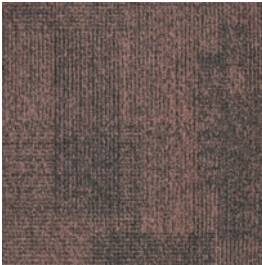
SKO146 MELON



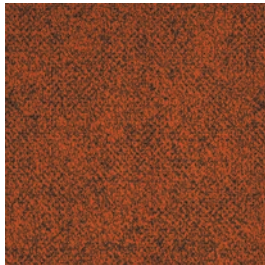
SKO128 SUNSET SCAPE



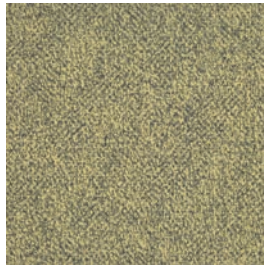
SKO141-103 KIWI PULP



SKO104 PINK ALMOND



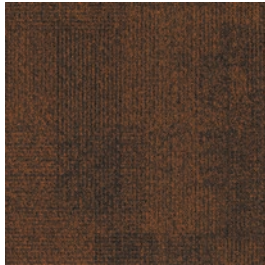
SKO33 MANDARIN SKIN



SKO75 BUTTER LEMON



SKO17 CINNAMON SUGAR



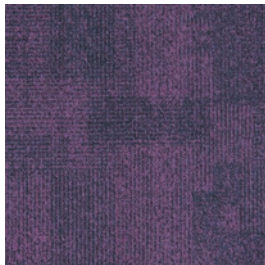
SKO57 CIGAR STEM



SKO105 PALE YOLK



SKO149 LAVENDER SPREAD



SKO137-181 VIOLET SILK



SKO164 RHUBARB STEM



SKO181 PALE PLUM



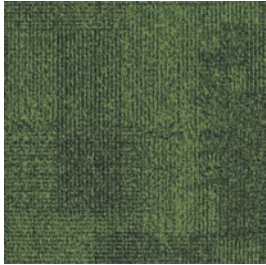
SKO97 WARM SMOKE



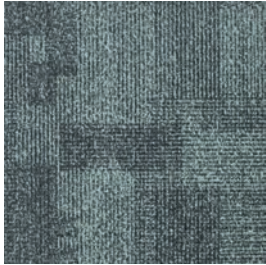
SKO118 ASH CLOUD



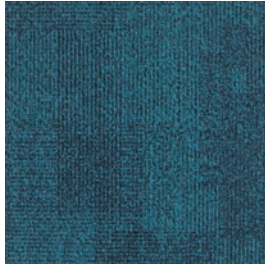
Worn Rope | SKO83 | Monolithic Installation



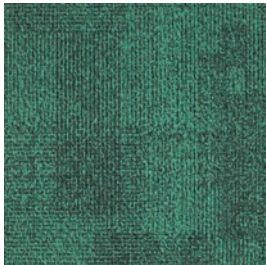
SKO141 PINE GREEN



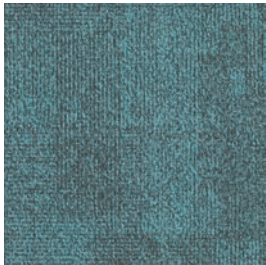
SKO172 PACIFIC TIDE



SKO159 BOWER BLUE



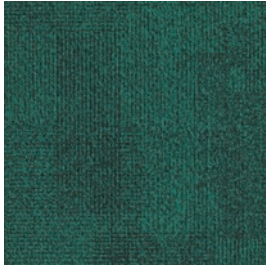
SKO62 EMERALD GEM



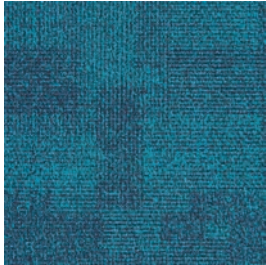
SKO140-159 SEA WASH



SKO126 SCUBA BLUE



SKO103 JADE LAKE



SKO140-126 TROPICS BLUE



SKO73 INDIGO DYE



SKO21 LINEN WEAVE



SKO171 SILVER WASH



SKO152 TIN LID



SKO41 DESERT BROWN



SKO83 WORN ROPE



SKO5 CHARRED ROCK

Milliken



Self-sanitising Carpet

Integrated Infection Control



MGUARD+ treatment kills 99% of the SARS-CoV-2 virus within 2 hours of contact with Milliken PrintWorks™ carpet tiles.

MGUARD+ treatment kills 99% of *S. aureus*, *E. coli*, *K. pneumoniae* in 24 hours as per AATCC 174-2.

Duration of protection varies with use.

Powered by HealthGuard®.

Only available in Australia and New Zealand.

Declare.



WellBAC®

Milliken WellBAC® open cell foam cushion provides superior durability, appearance retention and cushioning.



Up to 24% greater underfoot comfort for enhanced ergonomics whilst standing.



Up to 50% improved acoustics for quieter, more productive spaces.



Industry leading moisture management with non-reactive backings to enhance the installation process.



3rd party Verified Red-List Free products for occupant and installer well-being.



Enhanced Indoor Air Quality (Low VOC) for improved occupant and installer well-being.

FACE FABRIC

Patterns and structures made up of nylon yarns with our state of the art tufting technology.

PRIMARY BACKING

The face yarn is tufted through a high quality non-woven textile. The structure of the textile holds the yarn in place acting as the primary backing.

PRECOAT

The precoat layer locks the tufted yarns in the primary backing to ensure good tuft bind strength between the yarns and the backing.

FIBERGLASS

A high quality fiberglass layer is embedded in the polyolefin compound to ensure dimensional stability of the tile.

SECONDARY BACKING

Proprietary Polyolefin compound layer formulated by Milliken R&D scientists to create a durable and stable tile. Our formulation does not contain PVC or plasticizers.

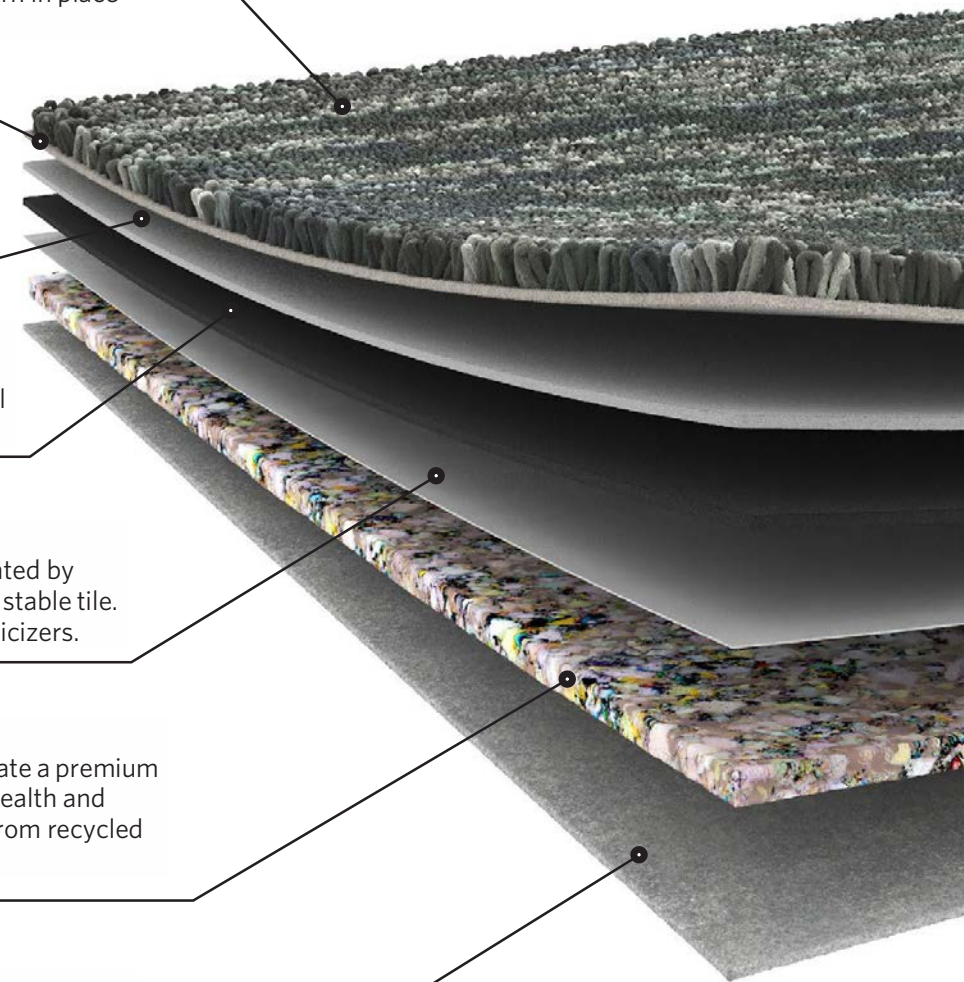
PREMIUM CUSHION

WellBAC® Comfort and Comfort Plus incorporate a premium cushion layer, designed to provide additional health and wellness benefits. Milliken's cushion is made from recycled polyurethane foam.

FELT BACK

A protective non-woven textile layer provides a breathable non-reactive finish. It enhances health and wellness.

Milliken's standard cushion backing system — offering enhanced underfoot comfort, acoustic and wear performance.



Milliken™

COLOUR CONNECT

Linx | Skor

SPECIFICATION



When you choose M/PACT™ products, you can be sure your choice is carbon neutral. M/PACT™ carbon neutral products offset the raw materials and manufacturing carbon footprint* by using 3rd party Verified Carbon Standard Credits that support renewable energy and carbon reduction technologies to help fight climate change.

*as calculated and verified through a ISO14025/ISO14040 compliant LCA and published in third party EPD.

Standard Backing	Cushion Backing WellBAC® Comfort (PVC FREE) (Non-Reactive Cushion Backing)
Acoustic Value	Noise Reduction Coefficient - NRC ≥ 0.25 Impact Sound Pressure Level - Ln,w ≤ 47 dB
Concrete Slab Moisture Mitigation	Site-Related Solutions (SRS). Milliken Cushion backed tile + Non-Reactive Standard adhesive means installation 60 days after a new concrete pour, fully warranted no moisture testing required. Refer millikenfloors.com.au
Antiviral Antibacterial	MGUARD+ Antiviral and Antibacterial Treatment. Further information refer to millikenfloors.com.au

Construction	Tufted, Textured Loop	Lightfastness (AATCC 16E)	≥ 4.0 at 80 Hours
Tile Size	50cm x 50cm	Static Electricity	≤ 3.5 KV
Yarn Type	Milliken Certified 100% Nylon	(AATCC-134) 20% R.H., 70°F	
Stain Resist Soil Release	StainSmart®	Indoor Air Quality	≤ 0.5 mg/m ³ (GLP0793)
Dye Method	PrintWorks™	CRI Green Label Plus™	
Gauge	1/8	VOC	Pass (ISO 10580:2010)
Stitches Per Inch	8.0	ACCS Grading	CEHD 4*, REHD2 6*, Suitable for Stairs
Tufts	64/in ² (991/100cm ²)	Environmental	ECS Grading - Level 4 (Certificate No. 17023)
Recyclable	100%		Declare - 3rd Party Verified RED LIST FREE
Nominal Total Thickness	7.9mm		Cradle to Cradle - Silver
Nominal Total Weight	96 oz/yd ² (3,255 g/m ²)		Carbon Neutral
Nominal Pile Thickness	2.29mm		Environmental Product Declaration (EPD)
Flammability (Radiant Panel Test)	CHF/CRF = 6.0kW/m ² , Smoke value = 235%.min		Health Product Declaration (HPD)

Recommended Installation Method(s)
Recommended Area of Use
Warranties

Linx, Skor: Monolithic | Skor: Brick (Horizontal)
Commercial Extra Heavy Duty
15-year Wear Warranty
15-year Dimensional Stability Warranty
15-year Anti-Static Warranty
15-year Castor Chair Wear Warranty



Alliance
Founding
Member

Declare.



Milliken

The University of Melbourne Student Precinct, Victoria | Lyons & Kane Constructions | Photographer: Kane Jarrod
Linx in Jade Lake | LNX103 | Monolithic Installation
Top Right: Custom Indigenous Carpet design by Francine Riches and Milliken | Monolithic Installation

Australia:
Toll Free: 1800 668 372
New Zealand:
Toll Free: 0800 668 372
www.millikenfloors.com.au
(Australia & New Zealand)

This WellBAC® cushion-back carpet tile product is covered by one or more patents, published applications and/or patents pending. Specifications are subject to normal manufacturing tolerances and may be changed without prior notice. Copies of actual test results are available upon request.

© 2022 Milliken & Company | Design © Milliken & Company