

CRETEX™ SL EPOXY RESIN

Self levelling floor topping and crack repair

Revised January 2018

DESCRIPTION

Cretex SL is a high strength three-part pourable epoxy resin compound, rapid curing and ideal for floor repairs in high traffic areas. Also used for high strength floor crack repairs and bonding of concrete slabs.

Cretex SL provides exceptional adhesive and bonding strength to masonry surfaces. Once mixed, it flows and self levels to fill eroded or chipped concrete surfaces. Approved aggregates can be added to improve slip resistance.

PRODUCT FEATURES

- The 3 components are supplied in a handy mixing pail
- Non-toxic and solvent free
- Rapid cure. Extremely hard in 12 hours!
- 45 minutes working time
- Primers not normally required
- Incredible adhesion to clean concrete
- Chemical resistant

USE AREAS

- Filling floor cracks, chips, holes etc.
- Spalled concrete floors
- Eroded concrete floors
- Structural concrete repairs
- Setting of reinforcing rods into concrete
- Beverage and food industry floors

APPLICATION INSTRUCTIONS

Surface Preparation

Ensure the substrate is in clean and sound condition. The surface shall be free of dirt, oil, grease, moss and loose material and not more than slightly damp.

Oily cavities, craters and cracks should be gauged out using a diamond cutting blade or v-wheel on an angle grinder. Or alternatively by shot-blasting.

Mixing Directions

Wear impervious gloves, such as latex or vinyl disposable gloves. Pour the complete contents of Part A and Part B into the mixing pail supplied. Do not mix part quantities. Stir until a consistent mix is obtained. Then add Part C and stir again until a consistent mix is obtained. Ensure that no unmixed ingredient is on the sides or bottom of the pail.

Do not thin Cretex SL with water.

In cold conditions, warming the product slightly will assist mixing, finishing and pourability. Once mixed working time is approximately 45 minutes.

Application

Surface should be dry. Pour the mixed product onto the floor surface and immediately spread out with a clean steel trowel or concrete float tool. For crack filling, pour the mixed Cretex SL into the cavity or crack and allow to settle. For injecting fine cracks, use a large Syringe.



CLEANING OF TOOLS

Equipment and tools should be wiped clean with a dry rag immediately after use. Solvent such as Mineral Turpentine or IPA can be used. Cured material can be removed with fine sandpaper.

PACKAGING

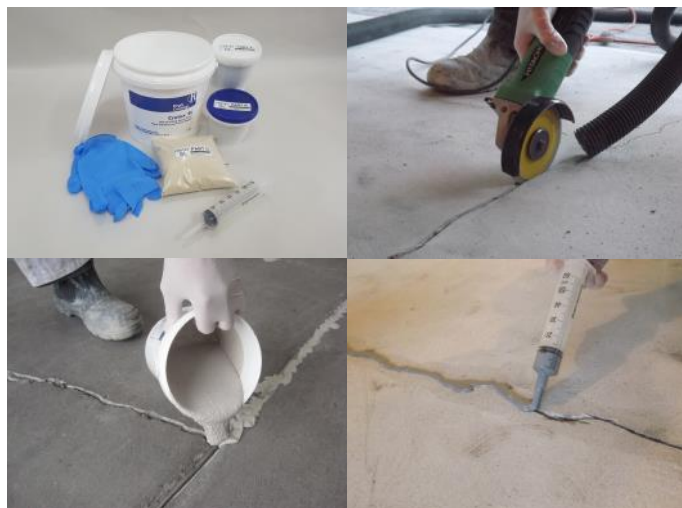
Cretex SL is available in 2kg/ 1.5 Litre and 6kg/ 4.5 Litre packs. Each pack is supplied in a handy mixing pail and consists of three components (Part A epoxy, Part B curing agent and Part C fillers).

CURING TIME

The curing time of Cretex SL will vary depending on temperature. Typical setting time is 2-4 hours. Lightly trafficable after 6 hours. Cures to full strength in 48-72 hours.

STORAGE

Shelf life is 12-24 months in original sealed containers, stored indoors at temperatures between 6°C and 30°C.



Freephone
0800 542 542

www.regiscoatings.co.nz

REGIS
COATINGS

PRODUCT DATA SUMMARY

Property	Typical Values
Colour, wet	Part A: Thick, Dark Grey resinous liquid Part B: Reddish brown liquid
Colour when cured	Mid grey
Appearance	Thick, resinous fluid
Flash point	110°C
Solids content	>95%
Specific gravity	1.3kg / litre
Compressive strength	53 MPa
Flexural strength	32 MPa
Tensile strength	14 MPa
Adhesive strength	Sandblasted steel: 20kg per cm ² Clean concrete: 35kg per cm ²
Heat resistance, 80°C	No flow, sag or blistering
Colour when cured	Mid grey
Setting time	2 to 4 hrs depending on temperature
Pot life once mixed	45 minutes at 20°C
Application Temperature Range	6°C to 35°C
Density when fully cured	1634kg/m ³
Chemical resistance	Excellent resistance to water, alcohol, salt solutions, acids, solvents, oil and alkalis.

Actual values may vary from the samples tested.

HEALTH AND SAFETY

Flammability: Non flammable.

Skin contact: Always wear impervious gloves, such as latex or vinyl disposable gloves when using this product. Occasional contact is unlikely to have any adverse effect except on particularly sensitive skin. As a general precaution, avoid repeated or prolonged contact. Remove skin contamination when wet with warm water and a proprietary hand cleaner.

Eye Contact: As eyes are a sensitive area, contact should be avoided. Wear safety glasses while mixing and applying. In the event of accidental contact, irrigate immediately with plenty of clean water. Consult a doctor.

Inhalation: Use in well ventilated areas and avoid inhalation. This product is not likely to cause breathing difficulty, but if breathing problems occur, move the person to fresh air and obtain medical attention.

Oral ingestion: With proper handling oral ingestion should not occur. The possibility can be minimized by not consuming food in the working area and by washing hands thoroughly before eating and drinking.

Spillage: Unused material should be disposed of in accordance with local regulations. Do not dispose of unused material into drains.

Disposal of containers: Do not leave empty containers on the work site where any residue could be a hazard to children or animals. Replace lids and remove all containers to a central disposal point.

BASIC MIXING DIRECTIONS

Refer also to the more detailed directions on page 1.

1.

Open kit. Contents should include Parts A, B & C, mixing pail, disposable nitrile gloves and applicator syringe.



2.

Combine Parts A & B.

Stir thoroughly. Add Part C filler blend and stir until a consistent mix is obtained.



3.

Pour mixed material in to cavity or syringe into cracks.



4.

If necessary, a diamond grinder can be used after 12 hours to achieve a smoother finish.



The information provided in this technical bulletin is as up-to-date and correct in detail as possible and is intended to give a fair description of the product and its capabilities. The user of these materials must satisfy themselves with the suitability for a particular application. If unsure about use with certain chemicals, please contact the manufacturer.



MANUFACTURED BY:

Regis Coatings Ltd

127 Antigua Street, Addington, Christchurch 8024, NZ

Phone: 64 3 962 6387 Freephone: 0800 542 542

Email: sales@regiscoatings.co.nz Website: www.regiscoatings.co.nz

Phone tollfree
0800 542 542

www.regiscoatings.co.nz

